

HPLC Application

ID No.: 18468

Calibration Curve for Cyanuric acid Extraction (20-2000ng/mL) from Strata Melamine on Luna HILIC

Column: Luna® 3 µm HILIC 200 Å, LC Column 100 x 2 mm, Ea

Dimensions: 100 x 2 mm ID

Order No: 00D-4449-B0

Elution Type: Isocratic

Eluent A: 90/10 ACN/100 mM Ammonium Formate, pH 3.2

Gradient	Step No.	Time (min)	Pct A
Profile:	1	3.5	100

Flow Rate: 0.4 mL/min

Col. Temp.: ambient

Detection: Mass Spectrometer (MS) @ (ambient)

Detector Info: * MS in -ve ionization till 1.7 mins then to +ve till 3.5 mins

Analyst Note: LC/MS/MS Condition:

Column: Luna 3µm HILIC, 100x2.0mm; Flow rate: 0.4ml/min

Mobile Phase: Isocratic; 90/10 ACN/100mM NH₄ Formate pH 3.2; MS Detector: API 3000 LC/MS/MS with ESI (TurboIonSpray®) (www.Appliedbiosystems.com), Switch from -ve Ion Mode (for cyanuric) to Positive Ion (for Melamine); MRM; heater gas flow 7000 cc/min; heater temperature 450 °C

Cyanuric acid QC - 200 ng

% Accuracy 100.1%

% CV 17%

Calibration Curve of Extracted Samples

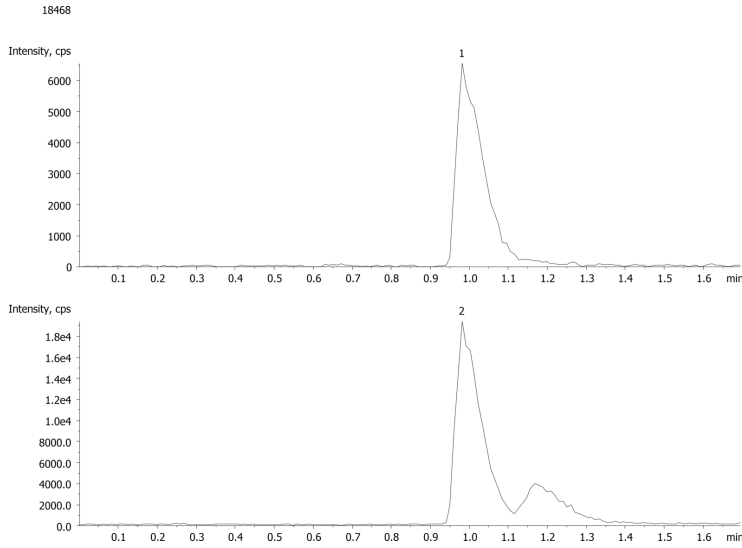
conc. (ng)	% Accuracy
20	104%
40	98%
200	95%
400	103%
2000	99.91%



Products used in this application:



Calibration Curve for Cyanuric acid Extraction (20-2000ng/mL) from Strata Melamine on Luna HILIC



ANALYTES:

- 1** Cyanuric acid
Retention Time: 0.98 min
- 2** Cyanuric-13C3
Retention Time: 0.98 min

