

BioMethanol Analysis - PME on ZB-FFAP

Column: Zebtron™ ZB-FFAP, GC Cap. Column 30 m x 0.25 mm x 0.25 μm, Ea

Phase: Nitroterephthalic Acid Modified Polyethylene Glycol

Dimensions: 30 meters x 0.25 mm x 0.25 μm

Order No: 7HG-G009-11

Oven Profile: 50 °C for 8 min

Carrier Gas: Constant Flow Hydrogen, 1 mL/min

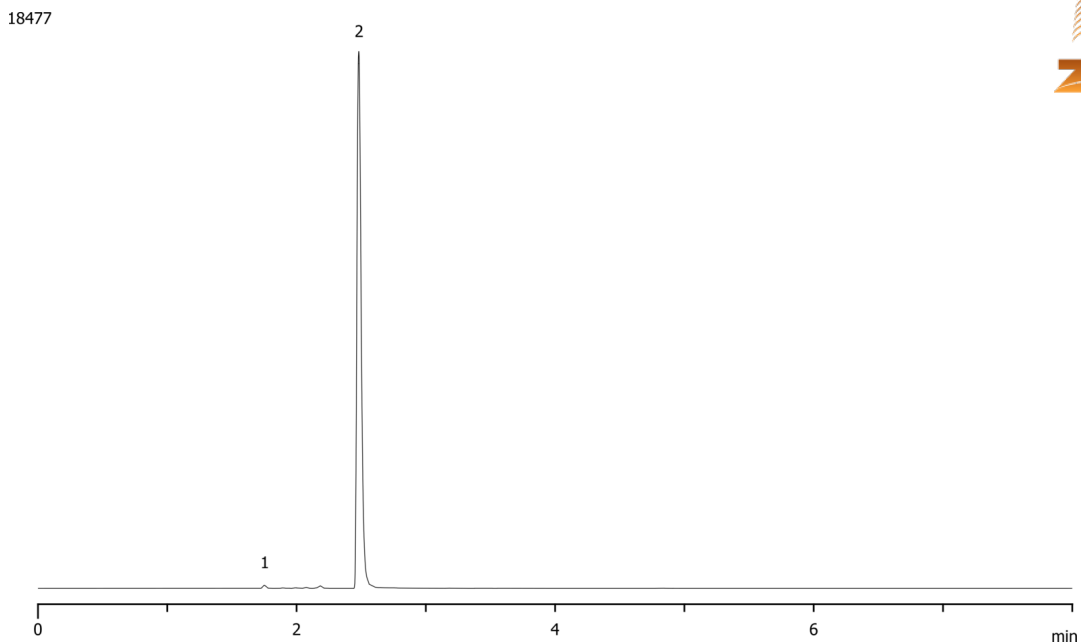
Injection: Split 50:1 1 μL @ 250°C

Detection: Flame Ionization (FID) (300°C)

Analyst Note: Courtesy of ASG (www.asg-analytik.de), a specialized Biofuel Laboratory!



Products used in this application:



ANALYTES:

- 1 Hexaninoel
- 2 Methanol-FAME

