

GC Application

ID No.: 18482

Expanded amphetamines from urine by Strata-XC on a ZB-Drug1

Column: Zebron™ ZB-Drug-1, GC Cap. Column 10 m x 0.18 mm x 0.18 µm, Ea

Phase: Proprietary Drug Phase

Dimensions: 10 meters x 0.18 mm x 0.18 µm

Order No: 7CD-G023-08

Oven Profile: 70 °C to 130 °C @ 20 °C/min to 320 °C @ 30 °C/min for 0.67 min

Carrier Gas: Constant Flow Helium, 0.7 mL/min

Injection: Split 10:1 1 µL @ 260°C

Detection: Mass Selective (MSD) (320°C)

Analyst Note: Analytes are 500ng/mL in urine derivatized with HFBA

Sim ions:

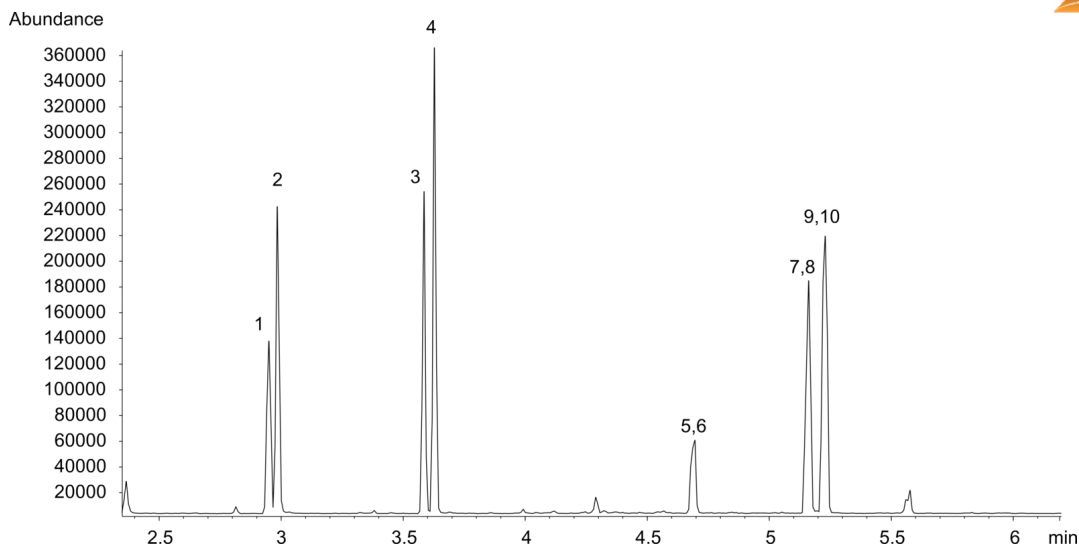
(Quant ion*) D11-Amphetamine (*244,128): Amphetamine (*240,118,117): D14-Methamphetamine (*261,213):

Methamphetamine (*254,210,118): D5-MDA (*167,380,244): MDA (*162,375,240): D5-MDMA (*258,213,164):

MDMA (*254,210,389): D5-MDEA (*273,241,408): MDEA (*268,240,403)



Products used in this application:



Expanded amphetamines from urine by Strata-XC on a ZB-Drug1

ANALYTES:

- 1 Amphetamine-d11
- 2 Amphetamine
- 3 Methamphetamine-d14
- 4 Methamphetamine
- 5 MDA-d5
- 6 MDA
- 7 MDMA-d5
- 8 MDMA
- 9 MDEA-d5
- 10 MDEA

