

## Melamine Screen on ZB-5ms with MSD (scan)

**Column:** Zebtron™ ZB-5MS, GC Cap. Column 30 m x 0.25 mm x 0.25 µm, Ea

**Phase:** 5% Phenyl-Arylene 95% Dimethylpolysiloxane

**Dimensions:** 30 meters x 0.25 mm x 0.25 µm

**Order No:** 7HG-G010-11

**Oven Profile:** 75 °C for 1 min to 320 °C @ 15 °C/min for 2.67 min.

**Carrier Gas:** Constant Flow Helium, 0.9 mL/min

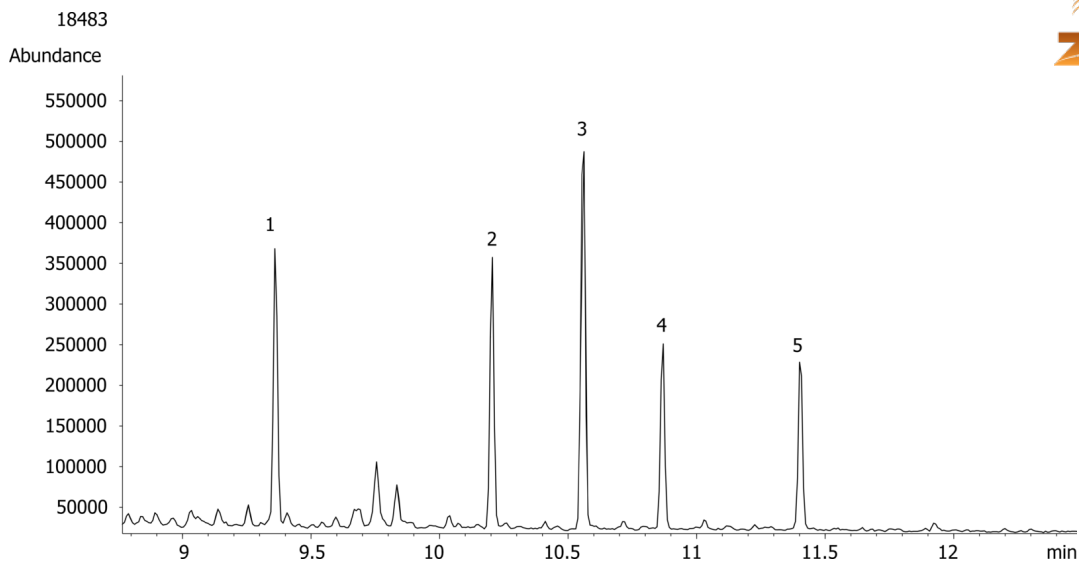
**Injection:** Splitless :1 1 µL @ 280°C

**Detection:** Mass Selective (MSD) (320°C)

**Analyst Note:** High Standard using Scan Mode.  
Analytes were derivatized with BSTFA in pyridine.



Products used in this application:



### ANALYTES:

- 1 Cyanuric acid
- 2 Ammelide
- 3 DACP
- 4 Ammeline
- 5 Melamine

