

GC Application

ID No.: 18485

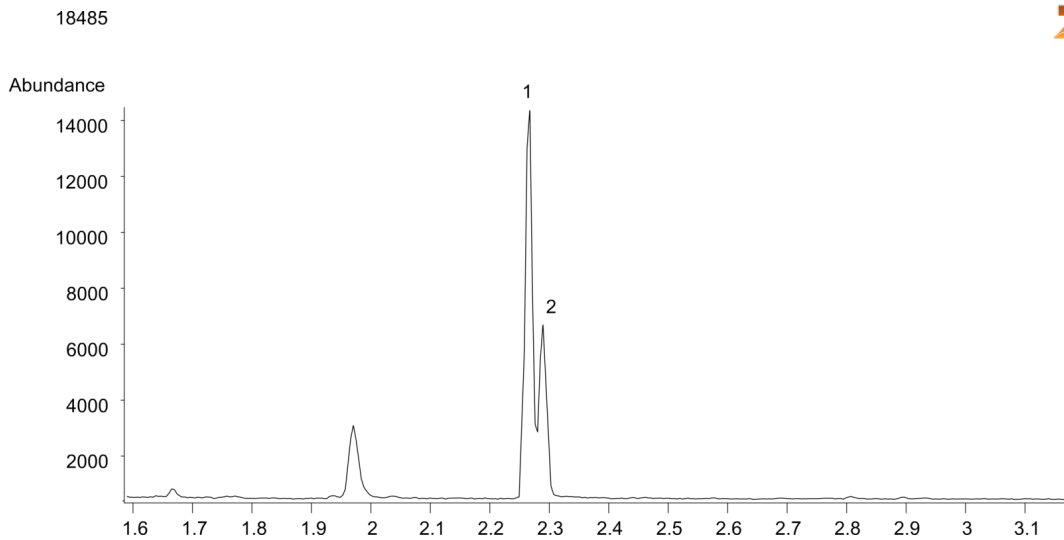
Methadone from urine by Strata-XC on a ZB-Drug1

Column: Zebtron[™] ZB-Drug-1, GC Cap. Column 10 m x 0.18 mm x 0.18 µm, Ea
Phase: Proprietary Drug Phase
Dimensions: 10 meters x 0.18 mm x 0.18 µm
Order No: 7CD-G023-08
Oven Profile: 180 °C to 340 °C @ 25 °C/min for 3.6 min

Carrier Gas: Constant Flow Helium, 55 cm/sec
Injection: Split 10:1 1 µL @ 280°C
Detection: Mass Selective (MSD) (320°C)
Analyst Note: Methadone/Methadone-d9 is 300/600ng/mL respectively in urine
Sim ions:
(Quant ion*) D9-Methadone (*78,303): Methadone (*72,294,223)



Products used in this application:



ANALYTES:

- 1 Methadone-d9
- 2 Methadone