

HPLC Application

ID No.: 18495

Phenolic Isomers on Kinetex 2.6 μ m C18 50 x 2.1mm ID

Column: Kinetex[®] 2.6 μ m C18 100 Å, LC Column 50 x 2.1 mm, Ea

Dimensions: 50 x 2.1 mm ID

Order No: 00B-4462-AN

Elution Type: Isocratic

Eluent A: 0.1 % Formic acid in Water

Eluent B: 0.1 % Formic acid in CH₃CN

| Gradient Profile: | Step No. | Time (min) | Pct A | Pct B |
|-------------------|----------|------------|-------|-------|
| | 1 | 3 | 70 | 30 |

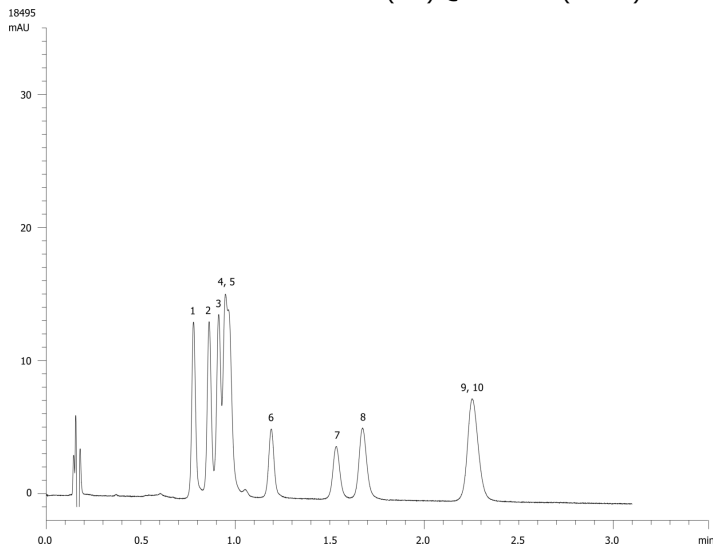
Flow Rate: 0.8 mL/min

Col. Temp.: ambient

Detection: UV-Vis Abs.-Variable Wave.(UV) @ 254 nm (25 °C)



Products used in this application:



Phenolic Isomers on Kinetex 2.6 μ m C18 50 x 2.1mm ID

ANALYTES:

- 1** 2,3-Dimethylphenol
- 2** 2,5-Dimethylphenol
- 3** 2,6-Dimethylphenol
- 4** 3,4-Dimethylphenol
- 5** 3,5-Dimethylphenol
- 6** 2,5-Dichlorophenol
- 7** 2,6-Dichlorophenol
- 8** 3,4-Dichlorophenol
- 9** 3,5-Dichlorophenol
- 10** 2,4-Dibromophenol

