

# HPLC Application

ID No.: 18501

## Positional Isomers (o, m, p-methylacetophenone) on Kinetex 2.6 $\mu$ m C18 50 x 2.1mm ID

**Column:** Kinetex<sup>®</sup> 2.6  $\mu$ m C18 100 Å, LC Column 50 x 2.1 mm, Ea

**Dimensions:** 50 x 2.1 mm ID

**Order No:** 00B-4462-AN

**Elution Type:** Isocratic

**Eluent A:** Water

**Eluent B:** MeOH

Gradient Profile:	Step No.	Time (min)	Pct A	Pct B
	1	7	70	30

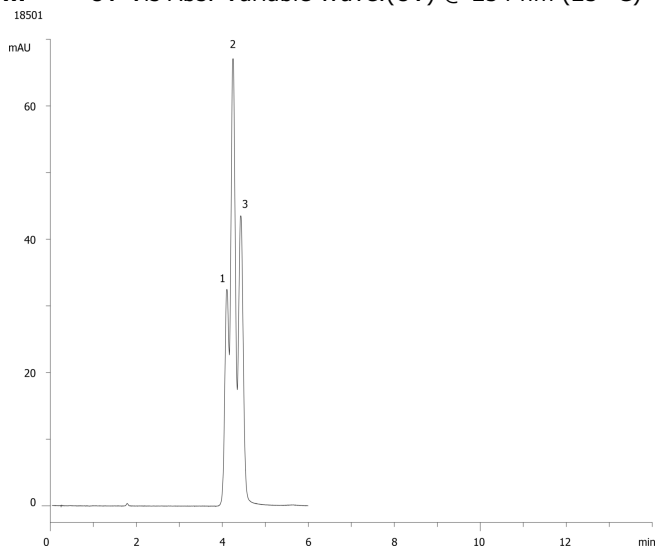
**Flow Rate:** 0.5 mL/min

**Col. Temp.:** ambient

**Detection:** UV-Vis Abs.-Variable Wave.(UV) @ 254 nm (25 °C)



Products used in this application:



### ANALYTES:

- 1** o-Methylacetophenone  
Retention Time: 4.1 min
- 2** p-Methylacetophenone  
Retention Time: 4.24 min
- 3** m-Methylacetophenone  
Retention Time: 4.42 min

