

Atenolol-Related Substance (European Pharmacopoeia) on Kinetex 2.6µm C18 150 x 4.6mm ID

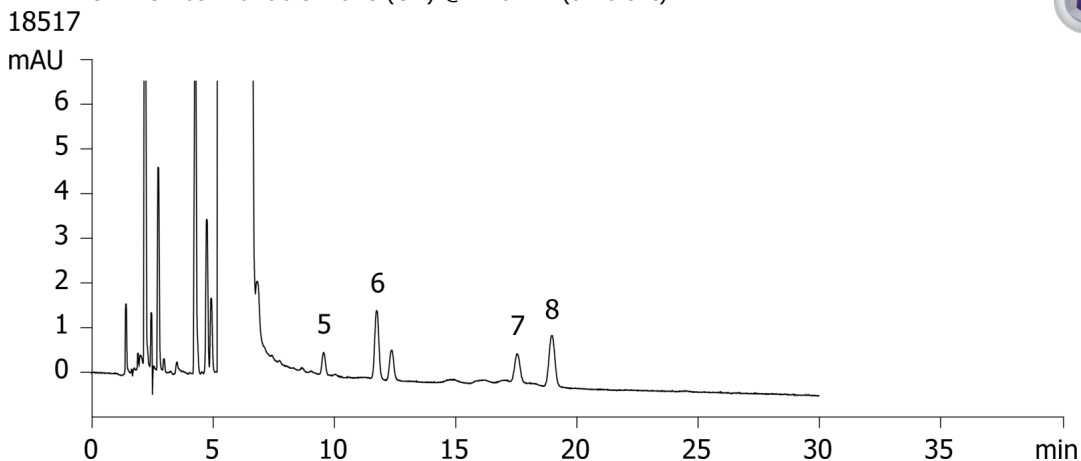
Column: Kinetex® 2.6 µm C18 100 Å, LC Column 150 x 4.6 mm, Ea
Dimensions: 150 x 4.6 mm ID
Order No: 00F-4462-E0
Elution Type: Isocratic
Eluent A: 12.5 mM KH₂PO₄ in Water, pH 3.0 + 2.0g Sodium Octanesulfonate + 0.8g Tetrabutyl Am
Eluent B: Methanol
Eluent C: THF
Gradient Profile:

Step No.	Time (min)	Pct A	Pct B	Pct C
1	0	80	18	2

Flow Rate: 0.8 mL/min
Col. Temp.: ambient
Detection: UV-Vis Abs.-Variable Wave.(UV) @ 226 nm (ambient)



Products used in this application:



ANALYTES:

- 1** Impurity B
Retention Time: 2.21 min
- 2** Impurity A
Retention Time: 2.9 min
- 3** Impurity J
Retention Time: 4.285 min
- 4** Impurity I
Retention Time: 4.76 min
- 5** Impurity D and E
Retention Time: 9.7 min
- 6** Impurity F
Retention Time: 11.77 min
- 7** Impurity G
Retention Time: 17.6 min
- 8** Impurity H
Retention Time: 18.99 min

