

Resorcinol / Catechol on Kinetex 2.6µm C18 50 x 2.1mm ID

Column: Kinetex® 2.6 µm C18 100 Å, LC Column 50 x 2.1 mm, Ea

Dimensions: 50 x 2.1 mm ID

Order No: 00B-4462-AN

Elution Type: Isocratic

Eluent A: 0.1% Formic acid in Water

Eluent B: 0.1% Formic acid in Acetonitrile

Gradient Profile:	Step No.	Time (min)	Pct A	Pct B
	1	3	85	15

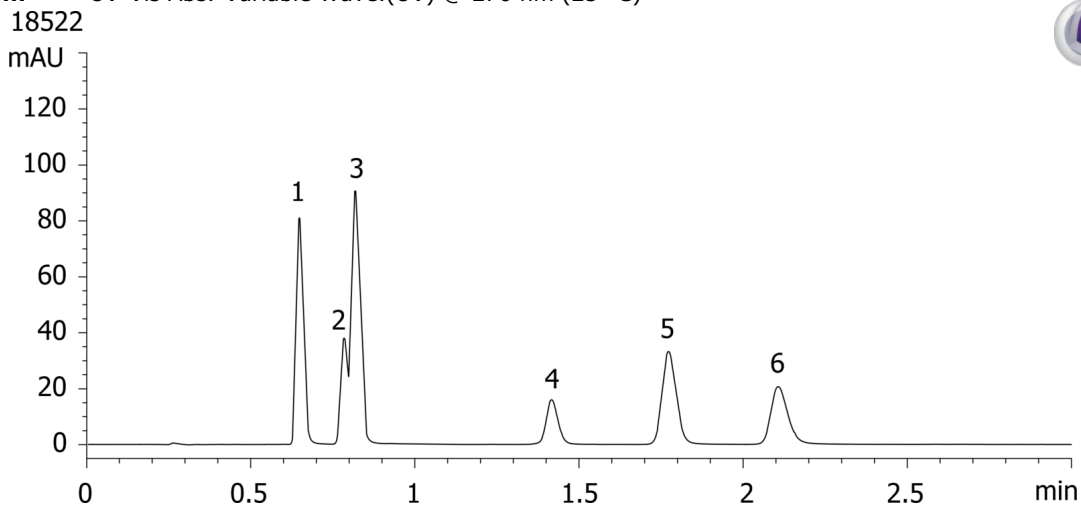
Flow Rate: 0.5 mL/min

Col. Temp.: ambient

Detection: UV-Vis Abs.-Variable Wave.(UV) @ 270 nm (25 °C)



Products used in this application:



ANALYTES:

- 1** Resorcinol
Retention Time: 0.64 min
- 2** 2-Methyl resorcinol
Retention Time: 0.78 min
- 3** Catechol
Retention Time: 0.81 min
- 4** 2,5-Dimethyl resorcinol
Retention Time: 1.41 min
- 5** 4-Methyl catechol
Retention Time: 1.77 min
- 6** 4-Nitro catechol
Retention Time: 2.1 min

