

## Soft Drink Additives on Kinetex 2.6µm C18 150 x 4.6mm ID

**Column:** Kinetex® 2.6 µm C18 100 Å, LC Column 150 x 4.6 mm, Ea

**Dimensions:** 150 x 4.6 mm ID

**Order No:** 00F-4462-E0

**Elution Type:** Gradient

**Eluent A:** 0.1% phosphoric acid in water

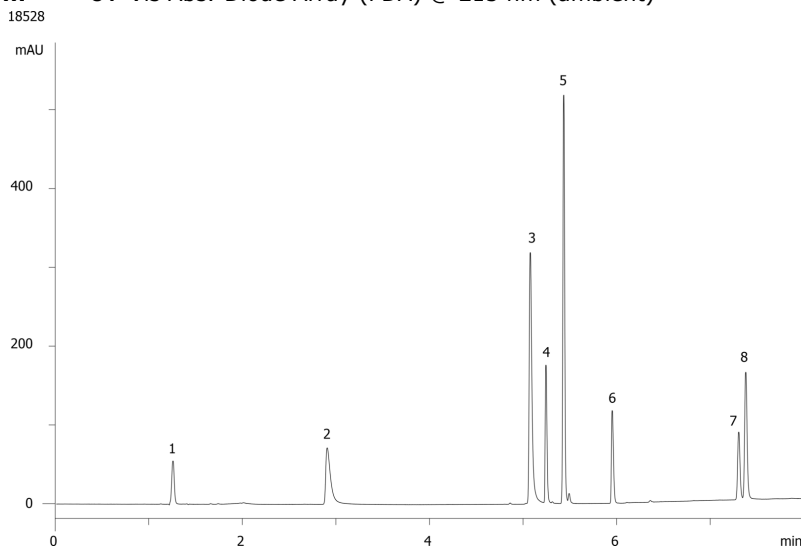
**Eluent B:** 0.1% phosphoric acid in acetonitrile

Gradient Profile:	Step No.	Time (min)	Pct A	Pct B
	1	0	95	5
	2	1.5	95	5
	3	6	60	40
	4	9.75	60	40
	5	11.25	5	95
	6	11.26	95	5
	7	15.75	95	5

**Flow Rate:** 1.2 mL/min

**Col. Temp.:** ambient

**Detection:** UV-Vis Abs.-Diode Array (PDA) @ 215 nm (ambient)



### ANALYTES:

- 1** Ascorbic acid  
Retention Time: 1.258 min
- 2** Acesulfame-K  
Retention Time: 2.907 min
- 3** Saccharin  
Retention Time: 5.077 min
- 4** Quinine  
Retention Time: 5.245 min
- 5** Caffeine  
Retention Time: 5.435 min
- 6** Aspartame  
Retention Time: 5.953 min
- 7** Sorbic acid  
Retention Time: 7.305 min
- 8** Benzoic acid  
Retention Time: 7.38 min

©2024 Phenomenex Inc. All rights reserved.

For more information contact your Phenomenex Representative at [support@phenomenex.com](mailto:support@phenomenex.com)



Phenomenex products are available worldwide.

[www.phenomenex.com](http://www.phenomenex.com)

[support@phenomenex.com](mailto:support@phenomenex.com)



Products used in this application:

