

# HPLC Application

ID No.: 18531

## Soft Drink Additives (Pepsi One) on Kinetex 2.6µm C18 100 x 4.6mm ID

**Column:** Kinetex® 2.6 µm C18 100 Å, LC Column 100 x 4.6 mm, Ea

**Dimensions:** 100 x 4.6 mm ID

**Order No:** 00D-4462-E0

**Elution Type:** Gradient

**Eluent A:** 0.1% phosphoric acid in water

**Eluent B:** 0.1% phosphoric acid in acetonitrile

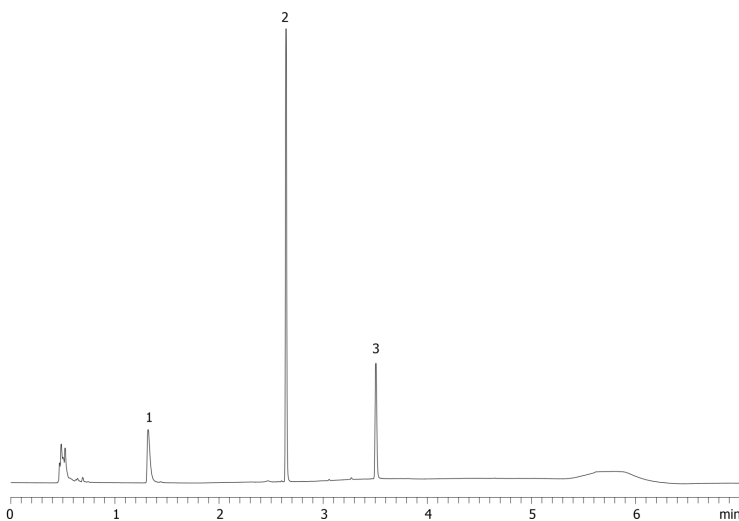
Gradient Profile:	Step No.	Time (min)	Pct A	Pct B
	1	0	95	5
	2	0.67	95	5
	3	2.67	60	40
	4	4.33	60	40
	5	5	5	95
	6	5.01	95	5
	7	7	95	5

**Flow Rate:** 1.8 mL/min

**Col. Temp.:** ambient

**Detection:** UV-Vis Abs.-Diode Array (PDA) @ 215 nm (ambient)

18531



### ANALYTES:

- 1** Acesulfame-K  
Retention Time: 1.319 min
- 2** Caffeine  
Retention Time: 2.643 min
- 3** Benzoic acid  
Retention Time: 3.506 min



Products used in this application:

