

HPLC Application

ID No.: 18532

Caffeine in Ground Coffee Beans on Kinetex 2.6 μ m C18 100 x 4.6mm ID

Column: Kinetex[®] 2.6 μ m C18 100 Å, LC Column 100 x 4.6 mm, Ea

Dimensions: 100 x 4.6 mm ID

Order No: 00D-4462-E0

Elution Type: Gradient

Eluent A: 0.1% phosphoric acid in water

Eluent B: 0.1% phosphoric acid in acetonitrile

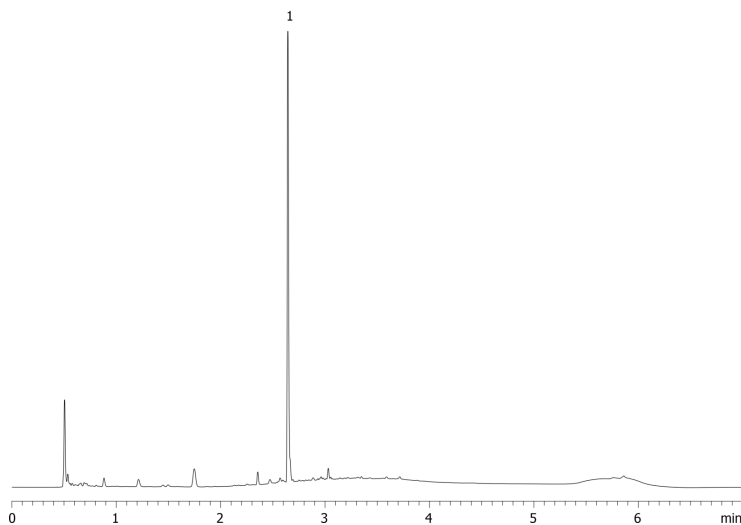
Gradient Profile:	Step No.	Time (min)	Pct A	Pct B
	1	0	95	5
	2	0.67	95	5
	3	2.67	60	40
	4	4.33	60	40
	5	5	5	95
	6	5.01	95	5
	7	7	95	5

Flow Rate: 1.8 mL/min

Col. Temp.: ambient

Detection: UV-Vis Abs.-Diode Array (PDA) @ 215 nm (ambient)

18532



ANALYTES:

1 Caffeine

Retention Time: 2.643 min



Products used in this application:

