

# HPLC Application

ID No.: 18533

## Cough and Cold Medicine on Kinetex 2.6 $\mu$ m C18 150 x 4.6mm ID

**Column:** Kinetex<sup>®</sup> 2.6  $\mu$ m C18 100 Å, LC Column 150 x 4.6 mm, Ea

**Dimensions:** 150 x 4.6 mm ID

**Order No:** 00F-4462-E0

**Elution Type:** Gradient

**Eluent A:** 0.1% phosphoric acid in water

**Eluent B:** 0.1% phosphoric acid in acetonitrile

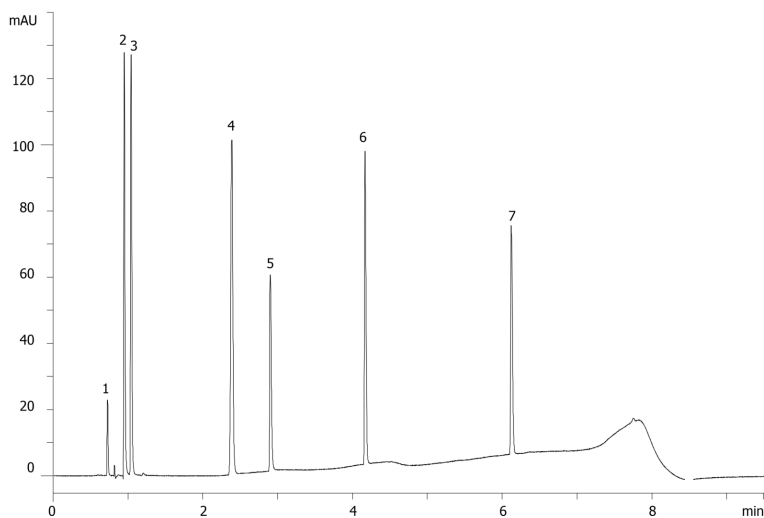
Gradient Profile:	Step No.	Time (min)	Pct A	Pct B
	1	0	95	5
	2	0.75	95	5
	3	6	50	50
	4	6.75	10	90
	5	6.76	95	5
	6	9.75	95	5

**Flow Rate:** 1.8 mL/min

**Col. Temp.:** ambient

**Detection:** UV-Vis Abs.-Diode Array (PDA) @ 215 nm (ambient)

18533



### ANALYTES:

**1** impurities from Dextromethorphan

Retention Time: 0.727 min

**2** Maleate

Retention Time: 0.951 min

**3** Phenylephrine

Retention Time: 1.042 min

**4** Acetmainophen

Retention Time: 2.387 min

**5** Doxylamine

Retention Time: 2.902 min

**6** Chlorpheniramine

Retention Time: 4.168 min

**7** Dextromethorphan

Retention Time: 6.12 min



Products used in this application:

