

Cough and Cold Medicine on Kinetex 2.6µm C18 100 x 4.6mm ID

Column: Kinetex® 2.6 µm C18 100 Å, LC Column 100 x 4.6 mm, Ea

Dimensions: 100 x 4.6 mm ID

Order No: 00D-4462-E0

Elution Type: Gradient

Eluent A: 0.1% phosphoric acid in water

Eluent B: ACN

Gradient Profile:	Step No.	Time (min)	Pct A	Pct B
	1	0	95	5
	2	0.41	95	5
	3	3.27	50	50
	4	3.68	10	90
	5	3.69	95	5
	6	5.32	95	5

Flow Rate: 2.2 mL/min

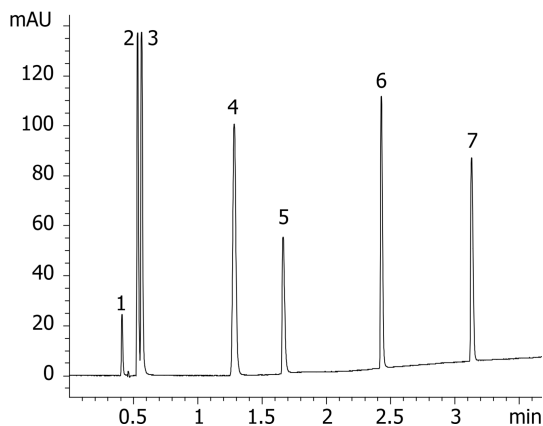
Col. Temp.: ambient

Detection: UV-Vis Abs.-Diode Array (PDA) @ 215 nm (ambient)

18534



Products used in this application:



ANALYTES:

1 impurities from dextromethorphan

Retention Time: 0.41 min

2 Maleate

Retention Time: 0.531 min

3 Phenylephrine

Retention Time: 0.562 min

4 Acetaminophen

Retention Time: 1.283 min

5 Doxylamine

Retention Time: 1.663 min

6 Chlorpheniramine

Retention Time: 2.427 min

7 Dextromethorphan

Retention Time: 3.13 min

