

HPLC Application

ID No.: 18535

Cough and Cold Medicine (Sudafed) on Kinetex 2.6 μ m C18 100 x 4.6mm ID

Column: Kinetex[®] 2.6 μ m C18 100 Å, LC Column 100 x 4.6 mm, Ea

Dimensions: 100 x 4.6 mm ID

Order No: 00D-4462-E0

Elution Type: Gradient

Eluent A: 0.1% phosphoric acid/water

Eluent B: 0.1% phosphoric acid/water

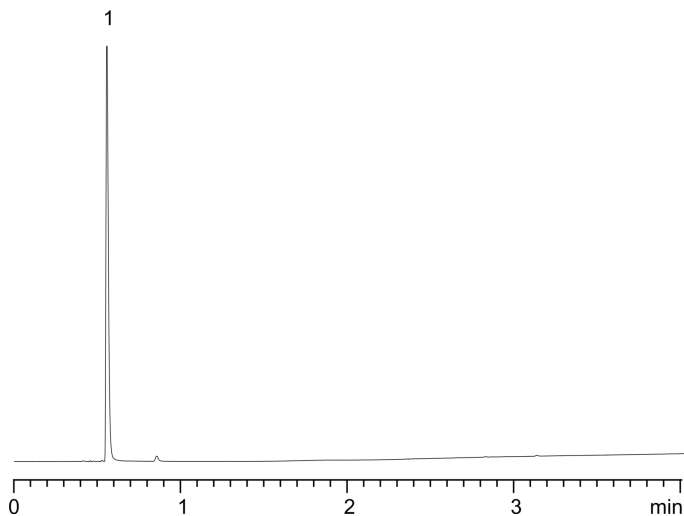
Gradient Profile:	Step No.	Time (min)	Pct A	Pct B
	1	0	95	5
	2	0.41	95	5
	3	3.27	50	50
	4	3.68	10	90
	5	3.69	95	5
	6	5.32	95	5

Flow Rate: 2.2 mL/min

Col. Temp.: ambient

Detection: UV-Vis Abs.-Diode Array (PDA) @ 215 nm (ambient)

18535



ANALYTES:

1 Phenylephrine

Retention Time: 0.558 min



Products used in this application:

