

## Cough and Cold Medicine (NyQuil) on Kinetex 2.6µm C18 100 x 4.6mm ID

**Column:** Kinetex® 2.6 µm C18 100 Å, LC Column 100 x 4.6 mm, Ea

**Dimensions:** 100 x 4.6 mm ID

**Order No:** 00D-4462-E0

**Elution Type:** Gradient

**Eluent A:** 0.1% phosphoric acid/water

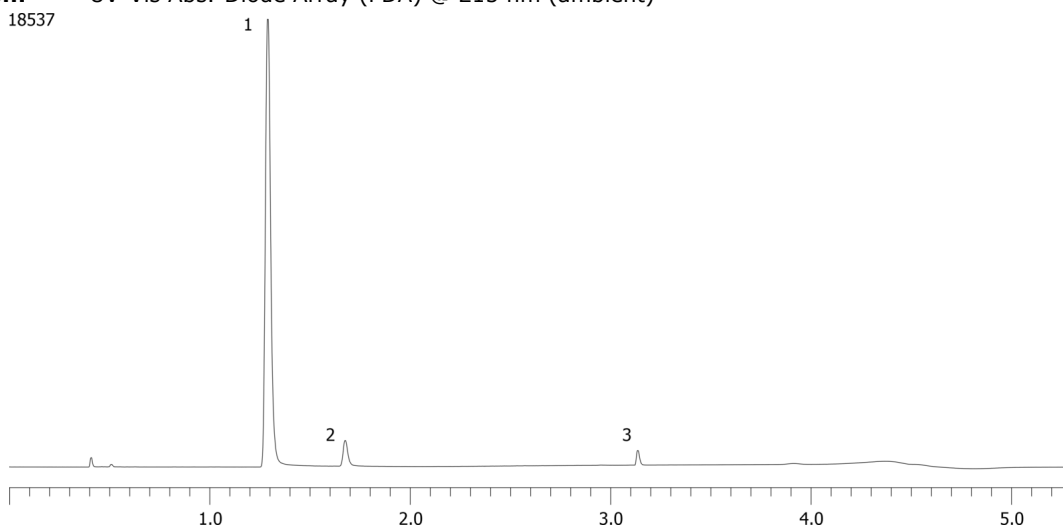
**Eluent B:** 0.1% phosphoric acid/acetonitrile

Gradient Profile:	Step No.	Time (min)	Pct A	Pct B
	1	0	95	5
	2	0.41	95	5
	3	3.27	50	50
	4	3.68	10	90
	5	3.69	95	5
	6	5.32	95	5

**Flow Rate:** 2.2 mL/min

**Col. Temp.:** ambient

**Detection:** UV-Vis Abs.-Diode Array (PDA) @ 215 nm (ambient)



### ANALYTES:

- 1** Acetaminophen  
Retention Time: 1.289 min
- 2** Doxylamine  
Retention Time: 1.675 min
- 3** Dextromethorphan  
Retention Time: 3.135 min



Products used in this application:

