

Column Test Mix (Agilent 1200SL) on Kinetex 2.6µm C18 150 x 4.6mm ID

Column: Kinetex® 2.6 µm C18 100 Å, LC Column 150 x 4.6 mm, Ea

Dimensions: 150 x 4.6 mm ID

Order No: 00F-4462-E0

Elution Type: Isocratic

Eluent A: Acetonitrile

Eluent B: Water

Gradient Profile:	Step No.	Time (min)	Pct A	Pct B
	1	0	70	30

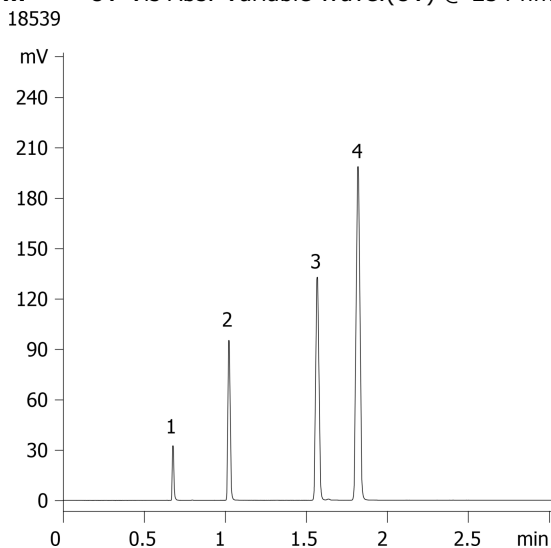
Flow Rate: 1.8 mL/min

Col. Temp.: ambient

Detection: UV-Vis Abs.-Variable Wave.(UV) @ 254 nm (ambient)



Products used in this application:



ANALYTES:

- 1** Uracil
Retention Time: 0.68 min
- 2** Acetophenone
Retention Time: 1.02 min
- 3** Toluene
Retention Time: 1.57 min
- 4** Naphthalene
Retention Time: 1.82 min

