

Analgesics using Kinetex 2.6µm C18 50 x 2.1mm ID (with KrudKatcher Ultra)

Column: Kinetex® 2.6 µm C18 100 Å, LC Column 50 x 2.1 mm, Ea

Dimensions: 50 x 2.1 mm ID

Order No: 00B-4462-AN

Elution Type: Gradient

Eluent A: Water with 0.1% Formic acid

Eluent B: Acetonitrile with 0.1% Formic Acid

Gradient Profile:	Step No.	Time (min)	Pct A	Pct B
	1	0	90	10
	2	2	10	90
	3	2.5	10	90
	4	2.51	90	10

Flow Rate: 1 mL/min

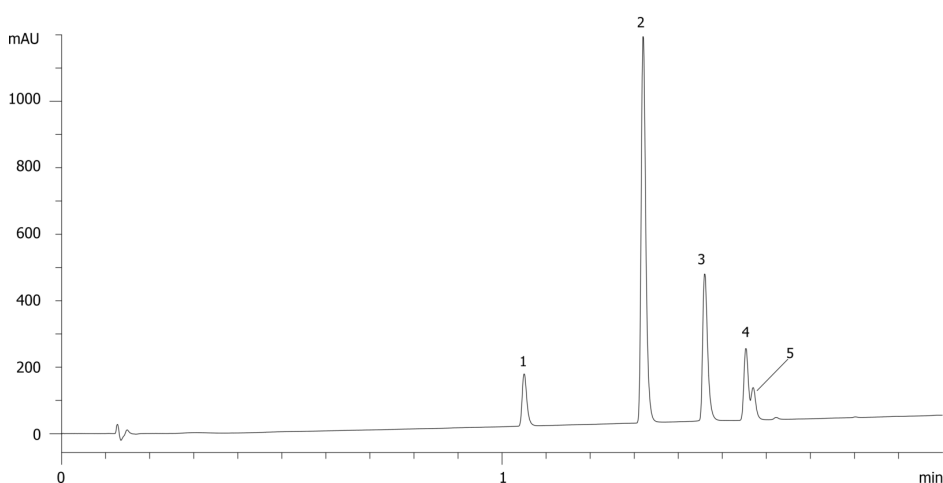
Col. Temp.: ambient

Detection: UV-Vis Abs.-Variable Wave.(UV) @ 230 nm (ambient)

18541



Products used in this application:



ANALYTES:

- 1 Ethyl paraben**
Retention Time: 1.05 min
- 2 Naproxen**
Retention Time: 1.32 min
- 3 Diflunisal**
Retention Time: 1.46 min
- 4 Indomethacin**
Retention Time: 1.55 min
- 5 Ibuprofen**
Retention Time: 1.57 min

