

HPLC Application

ID No.: 18542

Proprietary Screening Mixture on Kinetex 2.6µm C18 50 x 2.1mm ID (without KrudKatcher Ultra)

Column: Kinetex® 2.6 µm C18 100 Å, LC Column 50 x 2.1 mm, Ea

Dimensions: 50 x 2.1 mm ID

Order No: 00B-4462-AN

Elution Type: Gradient

Eluent A: Water with 0.1% Formic acid

Eluent B: Acetonitrile with 0.1% Formic Acid

Gradient Profile:	Step No.	Time (min)	Pct A	Pct B
	1	0	95	5
	2	1.75	20	80
	3	2.5	20	80
	4	2.51	95	5

Flow Rate: 0.8 mL/min

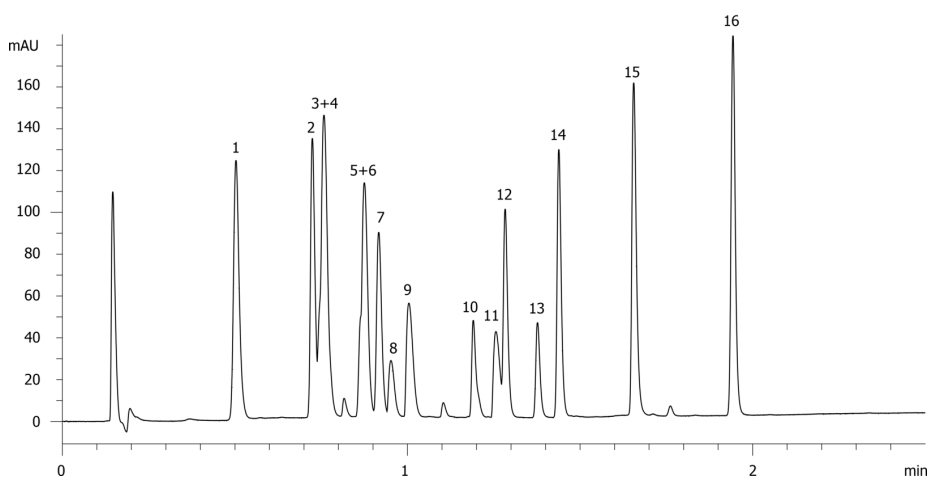
Col. Temp.: ambient

Detection: UV-Vis Abs.-Variable Wave.(UV) @ 254 nm (ambient)

18542



Products used in this application:



ANALYTES:

- 1 16-Component Proprietary Mixture

Retention Time: 0.503 min

