

HPLC Application

ID No.: 18544

Ambucetamide on Lux 5 µm Cellulose-1 250 x 4.6mm in RP

Column: Lux® 5 µm Cellulose-1, LC Column 250 x 4.6 mm, Ea

Dimensions: 250 x 4.6 mm ID

Order No: 00G-4459-E0

Elution Type: Isocratic

Eluent A: MeOH

Eluent B: 20mM NH₄HCO₃ + 0.1% DEA

Gradient Profile:	Step No.	Time (min)	Pct A	Pct B
	1	10	80	20

Flow Rate: 1 mL/min

Col. Temp.: ambient

Detection: UV-Vis Abs.-Variable Wave.(UV) @ 220 nm (ambient)

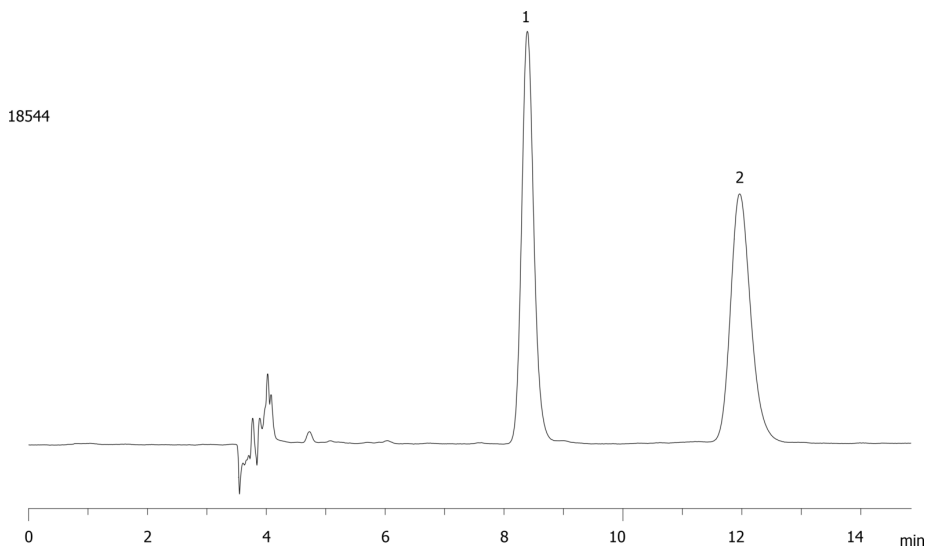
Analyst Note: SecurityGuard™ Guard Cartridge System extends column lifetime.

- SecurityGuard Cartridges, Lux Cellulose-1, 4 x 3.0mm ID, 10/Pk Part No.: AJ0-8403

- Holder Part No.: KJ0-4282



Products used in this application:



ANALYTES:

- 1** Ambucetamide
Retention Time: 8.39 min
- 2** Ambucetamide
Retention Time: 11.96 min