

## Tea Extracts / Catechins (Green Tea A) on Kinetex 2.6µm C18, 100 x 4.6mm ID

**Column:** Kinetex® 2.6 µm C18 100 Å, LC Column 100 x 4.6 mm, Ea

**Dimensions:** 100 x 4.6 mm ID

**Order No:** 00D-4462-E0

**Elution Type:** Gradient

**Eluent A:** 0.1% Phosphoric acid/water

**Eluent B:** 0.1% Phosphoric acid/acetonitrile

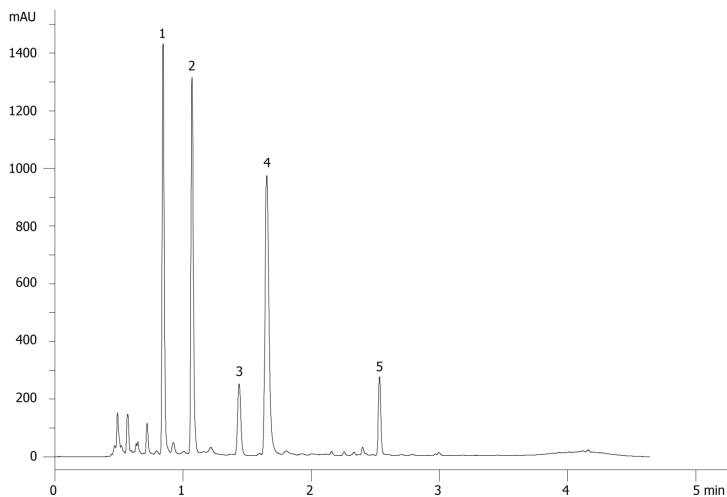
Gradient Profile:	Step No.	Time (min)	Pct A	Pct B
	1	0	85	15
	2	0.44	85	15
	3	2.67	65	35
	4	3.33	10	90
	5	3.34	85	15
	6	5.33	85	15

**Flow Rate:** 1.8 mL/min

**Col. Temp.:** ambient

**Detection:** UV-Vis Abs.-Diode Array (PDA) @ 215 nm (ambient)

18549



### ANALYTES:

- 1** Epigallocatechin  
Retention Time: 0.844 min
- 2** Catechin  
Retention Time: 1.07 min
- 3** Epicatechin  
Retention Time: 1.437 min
- 4** Epigallocatechin gallate  
Retention Time: 1.653 min
- 5** Epicatechin gallate  
Retention Time: 2.533 min



Products used in this application:

