

HPLC Application

ID No.: 18551

Tea Extracts / Catechins (Earl Grey Tea) on Kinetex 2.6 μ m C18, 100 x 4.6mm ID

Column: Kinetex[®] 2.6 μ m C18 100 Å, LC Column 100 x 4.6 mm, Ea

Dimensions: 100 x 4.6 mm ID

Order No: 00D-4462-E0

Elution Type: Gradient

Eluent A: 0.1% phosphoric acid/water

Eluent B: 0.1% phosphoric acid/acetonitrile

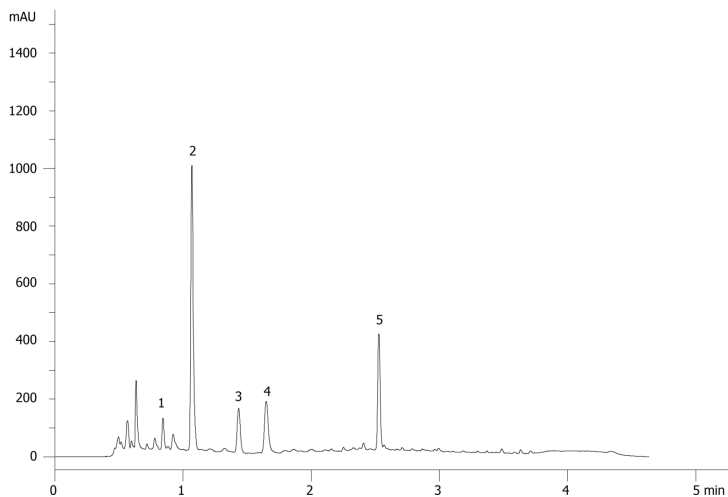
Gradient Profile:	Step No.	Time (min)	Pct A	Pct B
	1	0	85	15
	2	0.44	85	15
	3	2.67	65	35
	4	3.33	10	90
	5	3.34	85	15
	6	5.33	85	15

Flow Rate: 1.8 mL/min

Col. Temp.: ambient

Detection: UV-Vis Abs.-Diode Array (PDA) @ 215 nm (ambient)

18551



ANALYTES:

- 1** Epigallocatechin
Retention Time: 0.844 min
- 2** Catechin
Retention Time: 1.069 min
- 3** Epicatechin
Retention Time: 1.434 min
- 4** Epigallocatechin gallate
Retention Time: 1.649 min
- 5** Epicatechin gallate
Retention Time: 2.528 min



Products used in this application:

