

HPLC Application

ID No.: 18556

EPA 8330 - High-Speed Screening of Explosives using Kinetex 2.6µm C18 100 x 4.6mm ID

Column: Kinetex[®] 2.6 µm C18 100 Å, LC Column 100 x 4.6 mm, Ea

Dimensions: 100 x 4.6 mm ID

Order No: 00D-4462-E0

Elution Type: Gradient

Eluent A: Water

Eluent B: Methanol

Gradient Profile:	Step No.	Time (min)	Pct A	Pct B
	1	0	45	55
	2	5	35	65

Flow Rate: 1.4 mL/min

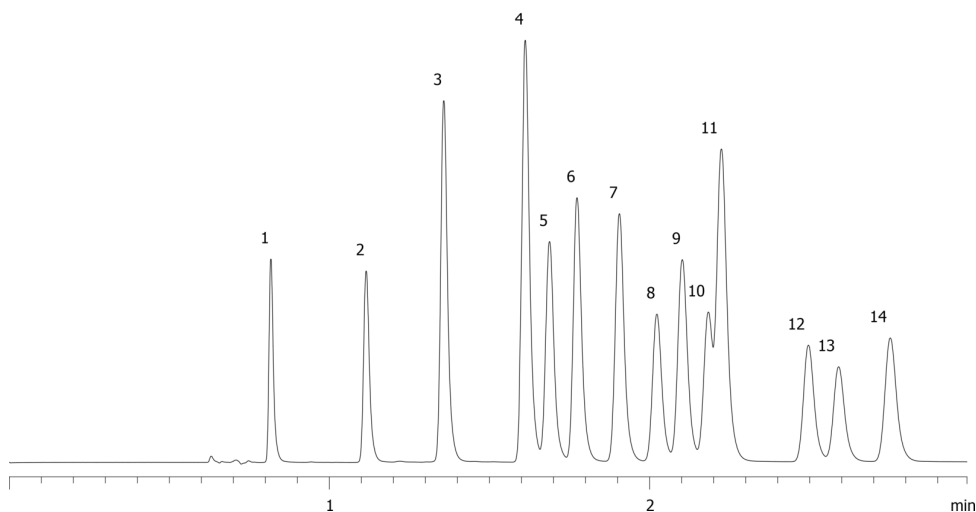
Col. Temp.: ambient

Detection: UV-Vis Abs.-Diode Array (PDA) @ 254 nm (ambient)

18556



Products used in this application:



EPA 8330 - High-Speed Screening of Explosives using Kinetex 2.6 μ m C18 100 x 4.6mm ID

ANALYTES:

- 1 HMX
- 2 RDX
- 3 1,3,5-Trinitrobenzene
- 4 1,3-Dinitrobenzene
- 5 Tetryl
- 6 Nitrobenzene
- 7 2,4,6-Trinitrotoluene
- 8 2-Amino-4,6-dinitrotoluene
- 9 4-Amino-2,6-dinitrotoluene
- 10 2,6-Dinitrotoluene
- 11 2,4-Dinitrotoluene
- 12 2-Nitrotoluene
- 13 4-Nitrotoluene
- 14 3-Nitrotoluene

