

# HPLC Application

ID No.: 18557

## EPA 8330 - Explosives using Kinetex 2.6µm C18 150 x 4.6mm ID

**Column:** Kinetex<sup>®</sup> 2.6 µm C18 100 Å, LC Column 150 x 4.6 mm, Ea

**Dimensions:** 150 x 4.6 mm ID

**Order No:** 00F-4462-E0

**Elution Type:** Gradient

**Eluent A:** Water

**Eluent B:** Methanol

Gradient Profile:	Step No.	Time (min)	Pct A	Pct B
	1	0	45	55
	2	6	35	65

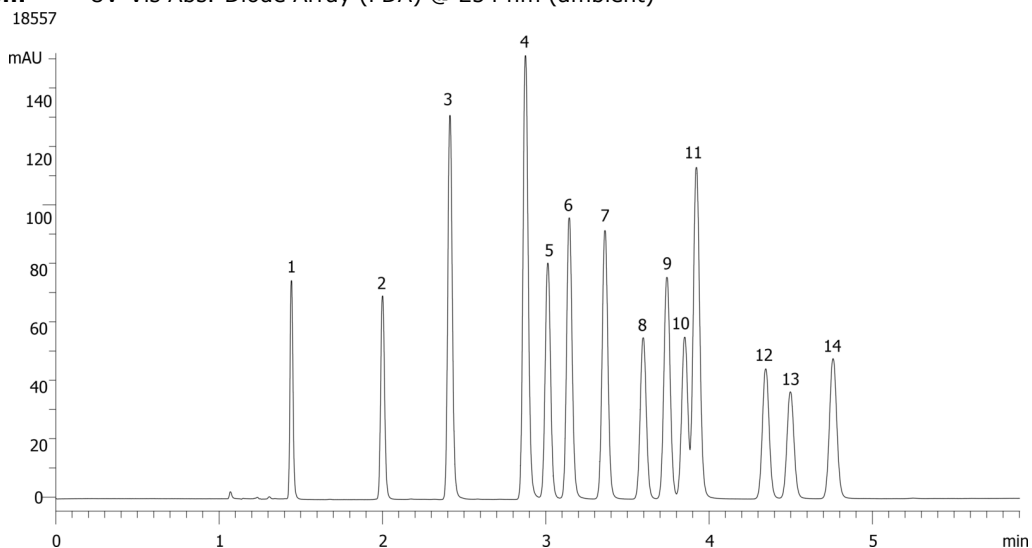
**Flow Rate:** 1.2 mL/min

**Col. Temp.:** ambient

**Detection:** UV-Vis Abs.-Diode Array (PDA) @ 254 nm (ambient)



Products used in this application:



## EPA 8330 - Explosives using Kinetex 2.6 $\mu$ m C18 150 x 4.6mm ID

### ANALYTES:

- 1 HMX
- 2 RDX
- 3 1,3,5-Trinitrobenzene
- 4 1,3-Dinitrobenzene
- 5 Tetryl
- 6 Nitrobenzene
- 7 2,4,6-Trinitrotoluene
- 8 2-Amino-4,6-dinitrotoluene
- 9 4-Amino-2,6-dinitrotoluene
- 10 2,6-Dinitrotoluene
- 11 2,4-Dinitrotoluene
- 12 2-Nitrotoluene
- 13 4-Nitrotoluene
- 14 3-Nitrotoluene

