

# HPLC Application

ID No.: 18571

## Ambucetamide Lux 5 $\mu$ Cellulose-2 in RP 80% MeOH

**Column:** Lux<sup>®</sup> 5  $\mu$ m Cellulose-2, LC Column 250 x 4.6 mm, Ea

**Dimensions:** 250 x 4.6 mm ID

**Order No:** 00G-4457-E0

**Elution Type:** Isocratic

**Eluent A:** Methanol

**Eluent B:** 20mM Ammonium bicarbonate + 0.1%DEA

Gradient Profile:	Step No.	Time (min)	Pct A	Pct B
	1	10	80	20

**Flow Rate:** 1 mL/min

**Col. Temp.:** ambient

**Detection:** UV-Vis Abs.-Variable Wave.(UV) @ 220 nm (ambient)

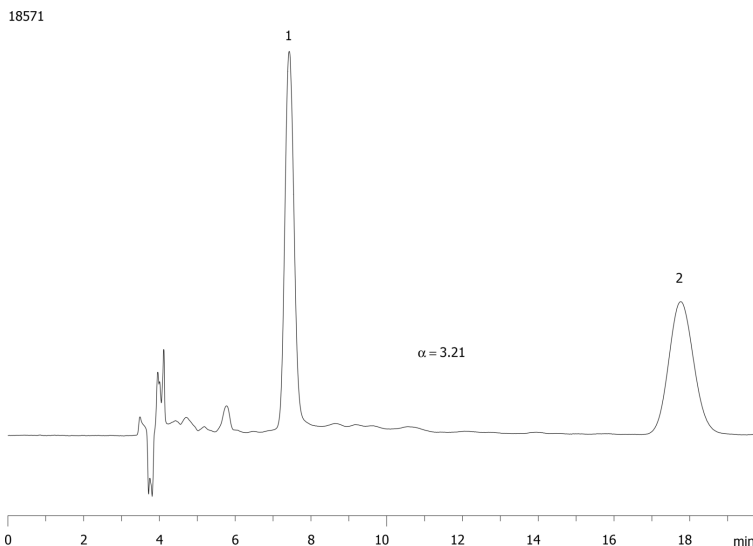
**Analyst Note:** SecurityGuard<sup>™</sup> Guard Cartridge System extends column lifetime.

- SecurityGuard Cartridges, Lux Cellulose-2, 4 x 3.0mm ID, 10/Pk Part No.: AJ0-8366

- Holder Part No.: KJ0-4282



Products used in this application:



### ANALYTES:

**1** Ambucetamide

Retention Time: 7.43 min

**2** Ambucetamide

Retention Time: 17.54 min

