

HPLC Application

ID No.: 18578

Pharmaceuticals Screening on Kinetex 2.6µm C18 150 x 4.6mm ID

Column: Kinetex® 2.6 µm C18 100 Å, LC Column 150 x 4.6 mm, Ea

Dimensions: 150 x 4.6 mm ID

Order No: 00F-4462-E0

Elution Type: Gradient

Eluent A: 0.1% phosphoric acid in water

Eluent B: 0.1% phosphoric acid in acetonitrile

Gradient Profile:	Step No.	Time (min)	Pct A	Pct B
	1	0	95	5
	2	9	5	95
	3	9.01	95	5
	4	12	95	5

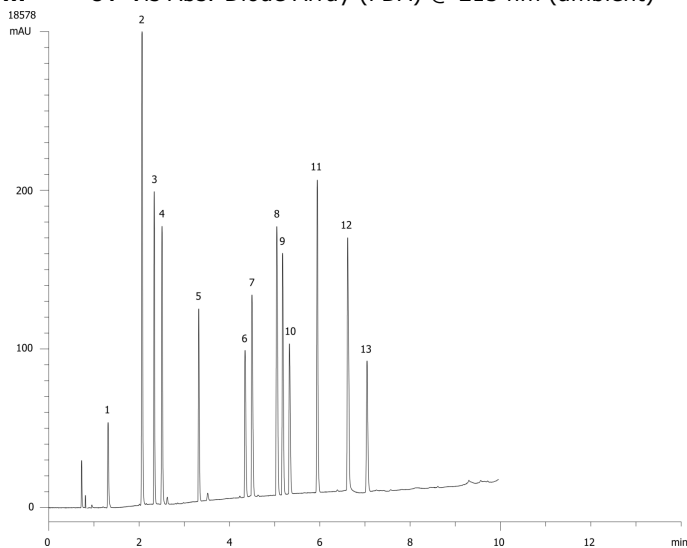
Flow Rate: 1.8 mL/min

Col. Temp.: ambient

Detection: UV-Vis Abs.-Diode Array (PDA) @ 215 nm (ambient)



Products used in this application:



Pharmaceuticals Screening on Kinetex 2.6 μ m C18 150 x 4.6mm ID

ANALYTES:

- 1 Procainamide
- 2 Acetaminophen
- 3 Folic acid
- 4 Sulfathiazole
- 5 Acebutolol
- 6 Dextromethorphan
- 7 Diphenhydramine
- 8 Propafenone
- 9 Amitriptyline
- 10 Fluoxetine
- 11 Naproxen
- 12 Diflunisal
- 13 Indomethacin

