

HPLC Application

ID No.: 18608

PCP on Kinetex 2.6µm C18 50 x 2.1mm ID with Acquity UPLC MS/MS

Column: Kinetex[®] 2.6 µm C18 100 Å, LC Column 50 x 2.1 mm, Ea

Dimensions: 50 x 2.1 mm ID

Order No: 00B-4462-AN

Elution Type: Gradient

Eluent A: 0.1% Formic acid in H₂O

Eluent B: 0.1% Formic acid in ACN

| Gradient Profile: | Step No. | Time (min) | Pct A | Pct B |
|-------------------|----------|------------|-------|-------|
| | 1 | 0 | 90 | 10 |
| | 2 | 1 | 35 | 65 |
| | 3 | 1.01 | 5 | 95 |
| | 4 | 1.5 | 5 | 95 |
| | 5 | 1.51 | 90 | 10 |
| | 6 | 3 | 90 | 10 |

Flow Rate: 700 µL/min

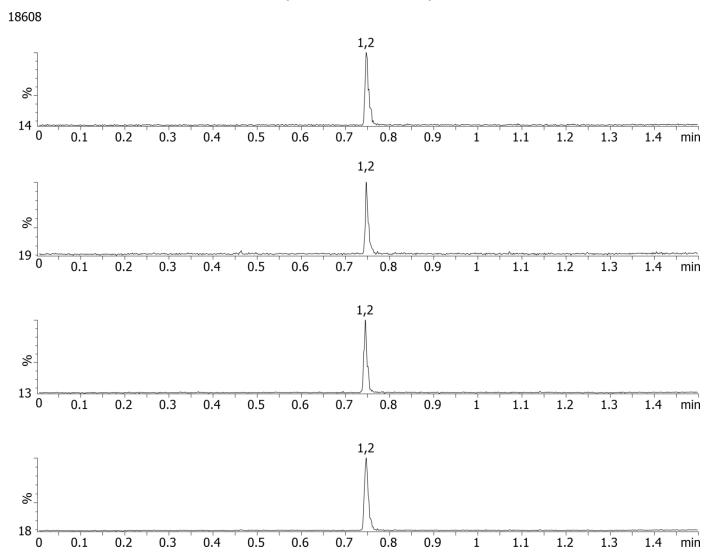
Col. Temp.: ambient

Detection: Mass Spectrometer (MS) @ amu (110 °C)

Detector Info: ESI+, MRM mode

PCP - 244.3 - 91.2 (quantitation) & 244.3 - 86.2 (qualifier)

d5-PCP - 249.3 - 164.4 (internal standard)



ANALYTES:

1 PCP

Retention Time: 0.75 min

2 PCP-d5

Retention Time: 0.75 min



Products used in this application:

