

## Aflatoxins on Kinetex 2.6µm C18 50 x 2.1mm ID by LC/MS

**Column:** Kinetex® 2.6 µm C18 100 Å, LC Column 50 x 2.1 mm, Ea

**Dimensions:** 50 x 2.1 mm ID

**Order No:** 00B-4462-AN

**Elution Type:** Gradient

**Eluent A:** 0.1% Formic acid and 5mM ammonium acetate in H<sub>2</sub>O

**Eluent B:** 0.1% Formic acid and 5mM ammonium acetate in methanol

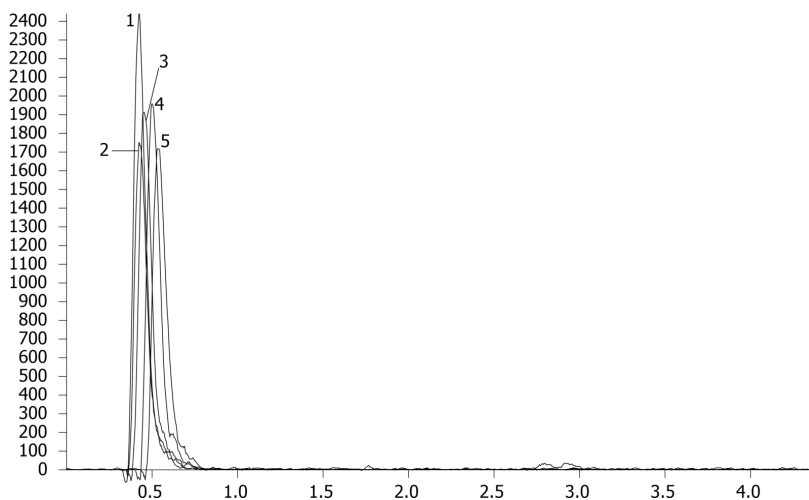
Gradient Profile:	Step No.	Time (min)	Pct A	Pct B
	1	0	50	50
	2	0.25	50	50
	3	2	30	70
	4	2.01	5	95
	5	2.5	5	95
	6	2.51	50	50
	7	4.4	50	50

**Flow Rate:** 400 µL/min

**Col. Temp.:** ambient

**Detection:** Mass Spectrometer (MS) @ amu (ambient)

18611



### ANALYTES:

- 1** Aflatoxins IS  
Retention Time: 0.43 min
- 2** Aflatoxin G2  
Retention Time: 0.43 min
- 3** Aflatoxin G1  
Retention Time: 0.45 min
- 4** Aflatoxin B2  
Retention Time: 0.5 min
- 5** Aflatoxin B1  
Retention Time: 0.53 min



Products used in this application:

