

HPLC Application

ID No.: 18621

6-MAM, PCP and Methadone on Kinetex 2.6µm C18 50 x 2.1mm ID with Acquity UPLC MS/MS (0.7 mL/min)

Column: Kinetex[®] 2.6 µm C18 100 Å, LC Column 50 x 2.1 mm, Ea

Dimensions: 50 x 2.1 mm ID

Order No: 00B-4462-AN

Elution Type: Gradient

Eluent A: 0.1% Formic acid in H₂O

Eluent B: 0.1% Formic acid in ACN

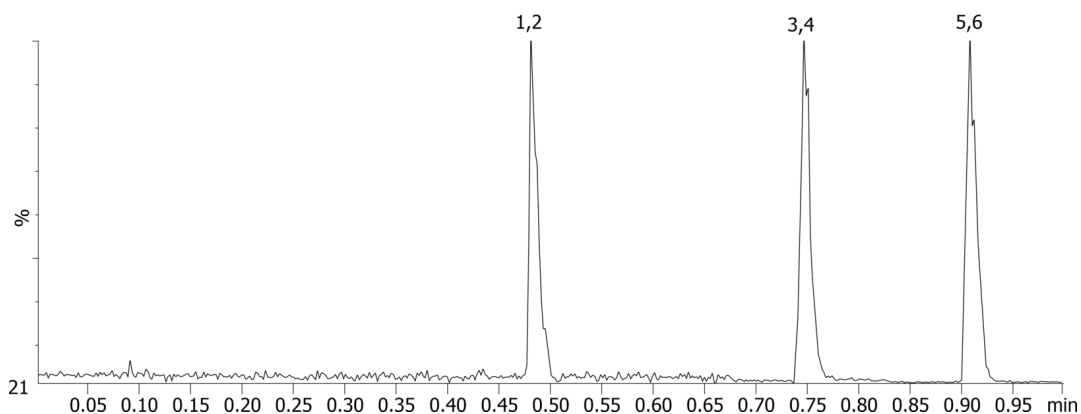
Gradient Profile:	Step No.	Time (min)	Pct A	Pct B
	1	0	90	10
	2	1	35	65
	3	1.01	5	95
	4	1.5	5	95
	5	1.51	90	10
	6	2.4	90	10

Flow Rate: 700 µL/min

Col. Temp.: ambient

Detection: Mass Spectrometer (MS) @ amu (110 °C)

18621



Products used in this application:



ANALYTES:

- 1** 6-MAM
Retention Time: 0.48 min
- 2** 6-MAM-d3
Retention Time: 0.48 min
- 3** PCP
Retention Time: 0.75 min
- 4** PCP-d5
Retention Time: 0.75 min
- 5** Methadone
Retention Time: 0.91 min
- 6** Methadone-d9
Retention Time: 0.91 min

