

# HPLC Application

ID No.: 18640

## Extraction of Tetracyclines using strata X-CW on Kinetex 2.6µm C18 50 x 2.1mm ID by LCMS

**Column:** Kinetex® 2.6 µm C18 100 Å, LC Column 50 x 2.1 mm, Ea

**Dimensions:** 50 x 2.1 mm ID

**Order No:** 00B-4462-AN

**Elution Type:** Gradient

**Eluent A:** 0.1% Formic acid in H<sub>2</sub>O

**Eluent B:** 0.1% Formic acid in ACN

Gradient Profile:	Step No.	Time (min)	Pct A	Pct B
	1	0	97	3
	2	0.24	97	3
	3	3.02	5	95
	4	3.3	5	95
	5	3.31	97	3
	6	4.97	97	3

**Flow Rate:** 450 µL/min

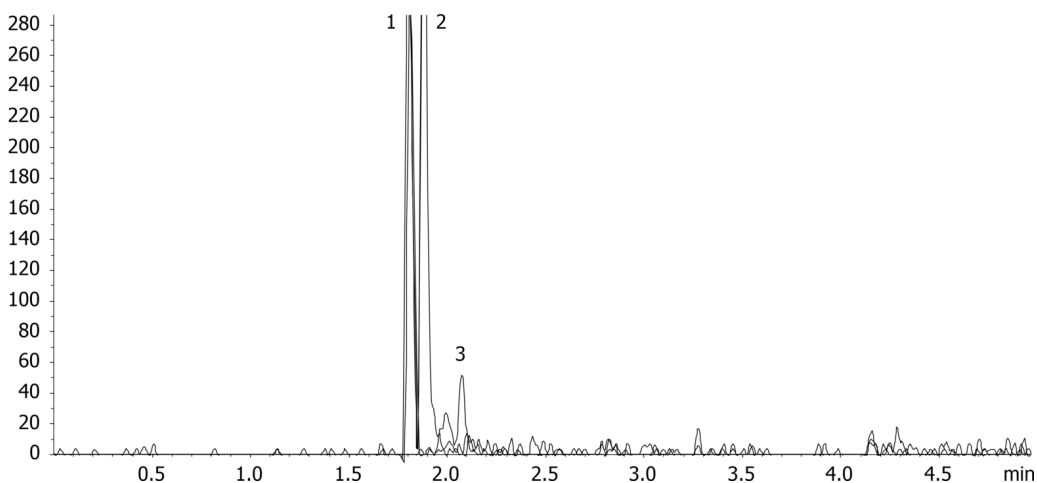
**Col. Temp.:** ambient

**Detection:** Mass Spectrometer (MS) @ amu (ambient)

18640



Products used in this application:



### ANALYTES:

- 1** Oxytetracycline  
Retention Time: 1.81 min
- 2** Tetracycline  
Retention Time: 1.88 min
- 3** Chlorotetracycline  
Retention Time: 2.07 min

