

HPLC Application

ID No.: 18643

Extraction of Sulfa drugs using Strata X-C on Kinetex 2.6µm C18 50 x 2.1mm ID by LCMS

Column: Kinetex® 2.6 µm C18 100 Å, LC Column 50 x 2.1 mm, Ea

Dimensions: 50 x 2.1 mm ID

Order No: 00B-4462-AN

Elution Type: Gradient

Eluent A: 0.1% Formic acid in H₂O

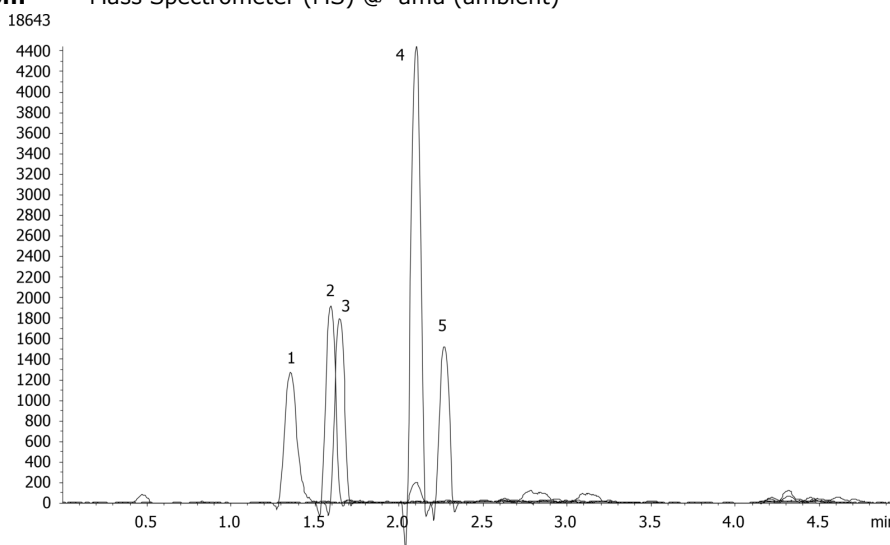
Eluent B: 0.1% Formic acid in ACN

Gradient Profile:	Step No.	Time (min)	Pct A	Pct B
	1	0	95	5
	2	0.24	95	5
	3	3.02	5	95
	4	3.3	5	95
	5	3.31	95	5
	6	4.97	95	5

Flow Rate: 450 µL/min

Col. Temp.: ambient

Detection: Mass Spectrometer (MS) @ amu (ambient)



ANALYTES:

- 1 Sulfadiazine**
Retention Time: 1.36 min
- 2 Sulfathiazole**
Retention Time: 1.59 min
- 3 Sulfamerazine**
Retention Time: 1.65 min
- 4 Sulfamethoxazole**
Retention Time: 2.1 min
- 5 Sulfaquinoxaline**
Retention Time: 2.27 min



Products used in this application:

