

HPLC Application

ID No.: 18646

6-MAM on Kinetex 2.6µm C18 50 x 2.1mm ID by LCMS

Column: Kinetex® 2.6 µm C18 100 Å, LC Column 50 x 2.1 mm, Ea

Dimensions: 50 x 2.1 mm ID

Order No: 00B-4462-AN

Elution Type: Gradient

Eluent A: 0.1% Formic acid in H₂O

Eluent B: 0.1% Formic acid in ACN

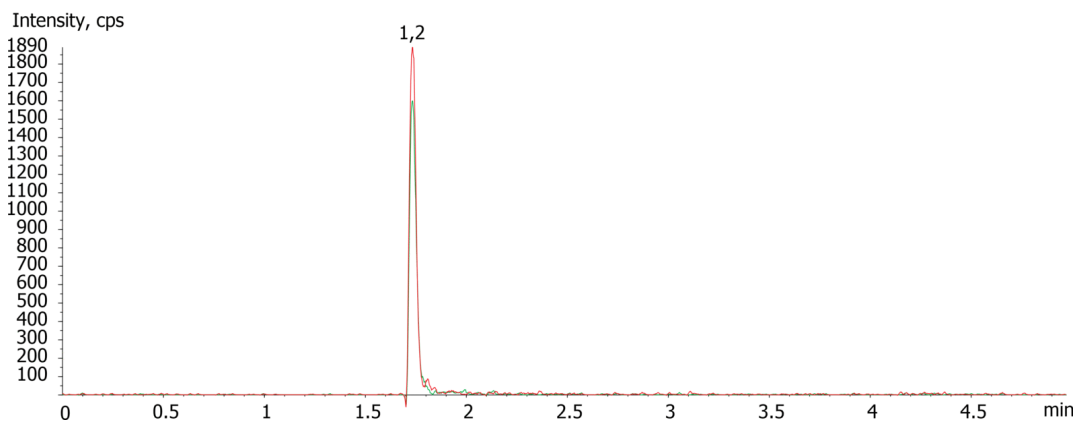
Gradient Profile:	Step No.	Time (min)	Pct A	Pct B
	1	0	97	3
	2	0.24	97	3
	3	3.02	5	95
	4	3.3	5	95
	5	3.31	97	3
	6	4.97	97	3

Flow Rate: 450 µL/min

Col. Temp.: ambient

Detection: Mass Spectrometer (MS) @ amu (ambient)

18646



ANALYTES:

- 1 6-MAM
- 2 6-MAM-d3



Products used in this application:

