

Catechins on Kinetex 2.6µm C18 150 x 4.6mm ID

Column: Kinetex® 2.6 µm C18 100 Å, LC Column 150 x 4.6 mm, Ea

Dimensions: 150 x 4.6 mm ID

Order No: 00F-4462-E0

Elution Type: Gradient

Eluent A: 0.1% Formic acid

Eluent B: 0.1% Formic acid in CH₃CN

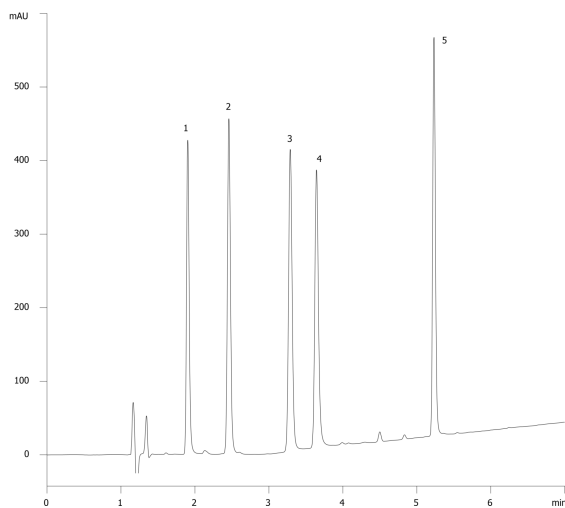
| Gradient Profile: | Step No. | Time (min) | Pct A | Pct B |
|-------------------|----------|------------|-------|-------|
| | 1 | 0 | 85 | 15 |
| | 2 | 1 | 85 | 15 |
| | 3 | 7 | 65 | 35 |
| | 4 | 7.01 | 85 | 15 |
| | 5 | 11 | 85 | 15 |

Flow Rate: 1.2 mL/min

Col. Temp.: ambient

Detection: UV-Vis Abs.-Diode Array (PDA) @ 230 nm (ambient)

18655



ANALYTES:

- 1** Epigallocatechin
Retention Time: 1.903 min
- 2** Catechin
Retention Time: 2.458 min
- 3** Epicatechin
Retention Time: 3.289 min
- 4** Epigallocatechin gallate
Retention Time: 3.643 min
- 5** Epicatechin gallate
Retention Time: 5.231 min



Products used in this application:

