

# HPLC Application

ID No.: 18663

## Sulfa Drugs on Kinetex 2.6µm C18 50 x 2.1mm ID by LCMS

**Column:** Kinetex<sup>®</sup> 2.6 µm C18 100 Å, LC Column 50 x 2.1 mm, Ea

**Dimensions:** 50 x 2.1 mm ID

**Order No:** 00B-4462-AN

**Elution Type:** Gradient

**Eluent A:** 0.1% Formic acid in H<sub>2</sub>O

**Eluent B:** 0.1% Formic acid in ACN

<b>Gradient Profile:</b>	<b>Step No.</b>	<b>Time (min)</b>	<b>Pct A</b>	<b>Pct B</b>
	<b>1</b>	0	95	5
	<b>2</b>	0.24	95	5
	<b>3</b>	3.02	5	95
	<b>4</b>	3.3	5	95
	<b>5</b>	3.31	95	5
	<b>6</b>	4.97	95	5

**Flow Rate:** 450 µL/min

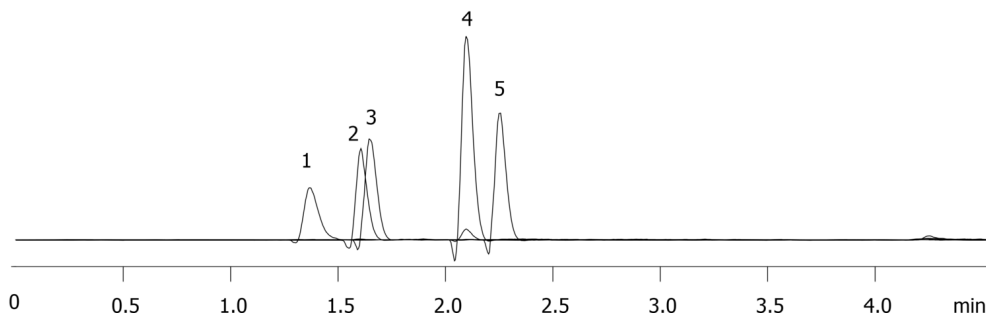
**Col. Temp.:** ambient

**Detection:** Mass Spectrometer (MS) @ amu (ambient)

18663



Products used in this application:



### ANALYTES:

- 1** Sulfadiazine  
Retention Time: 1.37 min
- 2** Sulfathiazole  
Retention Time: 1.61 min
- 3** Sulfamerazine  
Retention Time: 1.65 min
- 4** Sulfamethoxazole  
Retention Time: 2.1 min
- 5** Sulfaquinoxaline  
Retention Time: 2.25 min

