

Sulfa Drugs on Kinetex 2.6µm C18 150 x 4.6mm ID

Column: Kinetex® 2.6 µm C18 100 Å, LC Column 150 x 4.6 mm, Ea

Dimensions: 150 x 4.6 mm ID

Order No: 00F-4462-E0

Elution Type: Gradient

Eluent A: 0.1% Formica acid

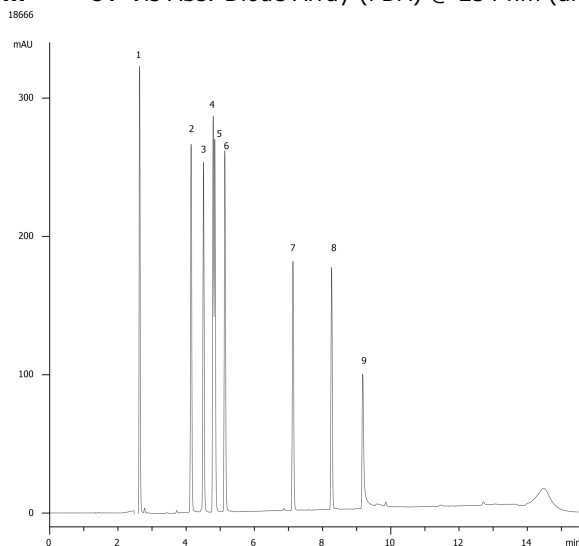
Eluent B: 0.1% Formica acid in CH₃CN

Gradient Profile:	Step No.	Time (min)	Pct A	Pct B
	1	0	95	5
	2	12	35	65
	3	12.01	95	5
	4	17	95	5

Flow Rate: 1.2 mL/min

Col. Temp.: ambient

Detection: UV-Vis Abs.-Diode Array (PDA) @ 254 nm (ambient)



Products used in this application:



ANALYTES:

- 1 Sulfanilamide**
Retention Time: 2.635 min
- 2 Sulfacetamide**
Retention Time: 4.145 min
- 3 Sulfadiazine**
Retention Time: 4.508 min
- 4 Sulfathiazole**
Retention Time: 4.793 min
- 5 Sulfapyridine**
Retention Time: 4.84 min
- 6 Sulfamerazine**
Retention Time: 5.135 min
- 7 Sulfamethoxazole**
Retention Time: 7.131 min
- 8 Sulfaquinoxaline**
Retention Time: 8.263 min
- 9 Sulfasalaxine**
Retention Time: 9.176 min

