

HPLC Application

ID No.: 18677

EPA 604 - Fast Separation of Phenols Mixture Using Kinetex 2.6µm C18 50 x 4.6 mm

Column: Kinetex[®] 2.6 µm C18 100 Å, LC Column 50 x 4.6 mm, Ea

Dimensions: 50 x 4.6 mm ID

Order No: 00B-4462-E0

Elution Type: Gradient

Eluent A: Water with 0.1% H₃PO₄

Eluent B: Acetonitrile with 0.1% H₃PO₄

Gradient Profile:	Step No.	Time (min)	Pct A	Pct B
	1	0	75	25
	2	1.5	5	95

Flow Rate: 2.2 mL/min

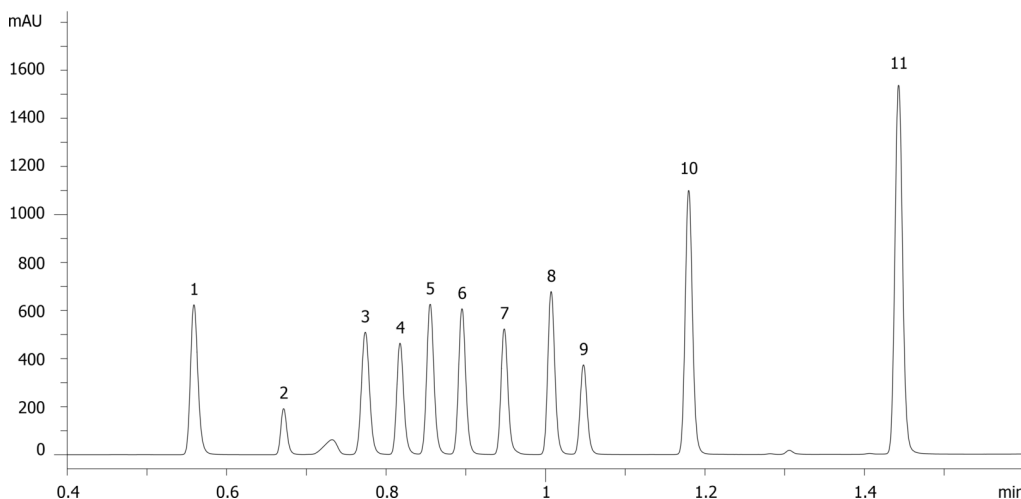
Col. Temp.: ambient

Detection: UV-Vis Abs.-Variable Wave.(UV) @ 214 nm (ambient)

18677



Products used in this application:



EPA 604 - Fast Separation of Phenols Mixture Using Kinetex 2.6µm C18 50 x 4.6 mm

ANALYTES:

- 1** Phenol
- 2** 4-Nitrophenol
- 3** 2-Chlorophenol
- 4** 2-Nitrophenol
- 5** 2,4-Dimethylphenol
- 6** 2,4-Dinitrophenol
- 7** 4-Chloro-3-methylphenol
- 8** 2,4-Dichlorophenol
- 9** 2-Methyl-4,6-dichlorophenol
- 10** 2,4,6-Trichlorophenol
- 11** Pentachlorophenol

