

# HPLC Application

ID No.: 18682

## Steroids on Kinetex 2.6µm C18 150 x 4.6mm ID

**Column:** Kinetex® 2.6 µm C18 100 Å, LC Column 150 x 4.6 mm, Ea

**Dimensions:** 150 x 4.6 mm ID

**Order No:** 00F-4462-E0

**Elution Type:** Gradient

**Eluent A:** Water

**Eluent B:** CH<sub>3</sub>CN

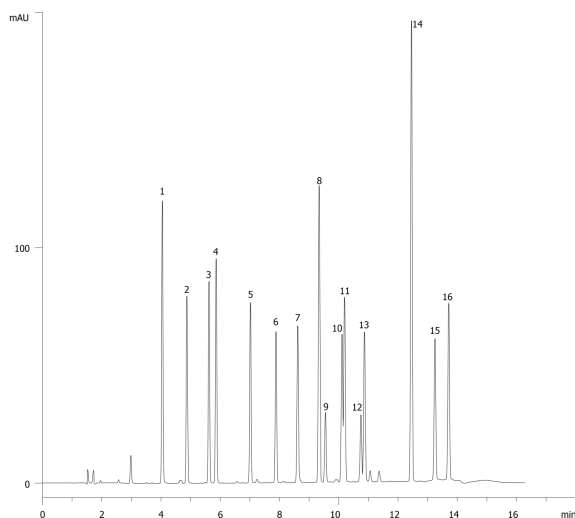
Gradient Profile:	Step No.	Time (min)	Pct A	Pct B
	1	0	75	25
	2	12	35	65
	3	12.1	75	25
	4	16	75	25

**Flow Rate:** 1.2 mL/min

**Col. Temp.:** ambient

**Detection:** UV-Vis Abs.-Diode Array (PDA) @ 230 nm (ambient)

18682



Products used in this application:



## Steroids on Kinetex 2.6µm C18 150 x 4.6mm ID

### ANALYTES:

- 1 Triamcinolone
- 2 Estriol
- 3 Prednisone
- 4 Cortisone
- 5 Betamethasone
- 6 Corticosterone
- 7 Triamcinalone acetate
- 8 11-alpha-Hydroxyprogesterone
- 9 Cortisone acetate
- 10 Estradiol
- 11 21-Hydroxyprogesterone
- 12 11-Ketoprogesterone
- 13 Estrone
- 14 17-Hydroxyprogesterone
- 15 Deoxycorticosterone
- 16 Betamethasone Valerate

