

Fat Soluble Vitamins on Kinetex 2.6µm C18 150 x 4.6mm ID

Column: Kinetex® 2.6 µm C18 100 Å, LC Column 150 x 4.6 mm, Ea

Dimensions: 150 x 4.6 mm ID

Order No: 00F-4462-E0

Elution Type: Isocratic

Eluent A: Acetonitrile

Eluent B: Methanol

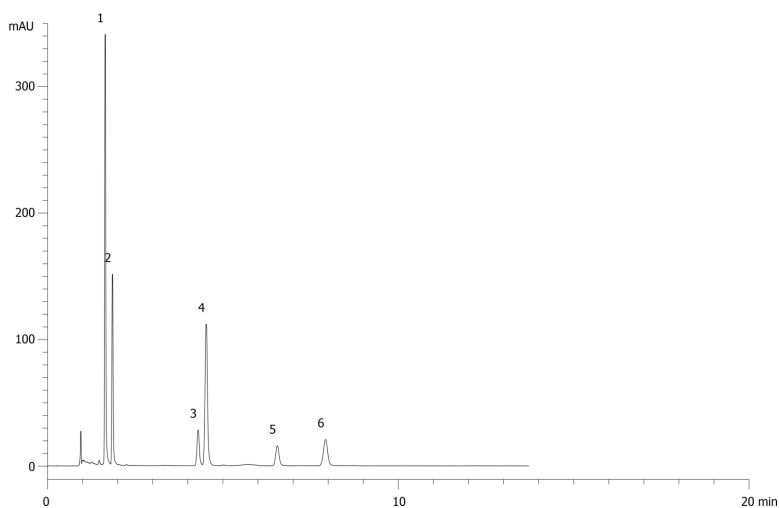
Gradient Profile:	Step No.	Time (min)	Pct A	Pct B
	1	0	95	5

Flow Rate: 1.5 mL/min

Col. Temp.: ambient

Detection: UV-Vis Abs.-Variable Wave.(UV) @ 280 nm (ambient)

18696



ANALYTES:

- 1** Vitamin A
Retention Time: 1.64 min
- 2** Vitamin A acetate
Retention Time: 1.85 min
- 3** Vitamin E
Retention Time: 4.29 min
- 4** Vitamin D3
Retention Time: 4.52 min
- 5** Vitamin E acetate
Retention Time: 6.55 min
- 6** Vitamin K1
Retention Time: 7.92 min



Products used in this application:

