

Paracetamol Related substances using Kinetex 2.6µm C18 150 x 4.6mm ID

Column: Kinetex® 2.6 µm C18 100 Å, LC Column 150 x 4.6 mm, Ea

Dimensions: 150 x 4.6 mm ID

Order No: 00F-4462-E0

Elution Type: Isocratic

Eluent A: 100 mM Na₂HPO₄

Eluent B: 50 mM NaH₂PO₄

Eluent C: 4 g/L (Bu)₄NOH in methanol

| Gradient Profile: | Step No. | Time (min) | Pct A | Pct B | Pct C |
|-------------------|----------|------------|-------|-------|-------|
| | 1 | 0 | 37.5 | 37.5 | 25 |

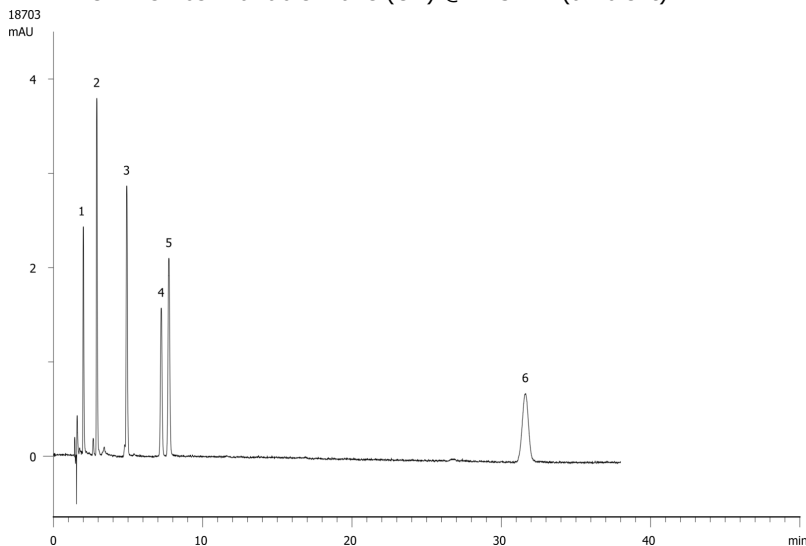
Flow Rate: 0.9 mL/min

Col. Temp.: ambient

Detection: UV-Vis Abs.-Variable Wave.(UV) @ 245 nm (ambient)



Products used in this application:



ANALYTES:

- 1** Impurity K (4-aminophenol)
Retention Time: 2 min
- 2** Paracetamol
Retention Time: 2.9 min
- 3** impurity A (N-(2-hydroxyphenyl)acetamide)
Retention Time: 4.9 min
- 4** Impurity I (1-(2-hydroxyphenyl)ethanone)
Retention Time: 7.22 min
- 5** Impurity F (4-nitrophenol)
Retention Time: 7.73 min
- 6** Impurity J (N-(4-chlorophenyl)acetamide (chloroacetanilide))
Retention Time: 31.6 min

