

Aflatoxins on Kinetex 2.6µm C18 50 x 2.1mm ID with Acquity UPLC MS/MS

Column: Kinetex® 2.6 µm C18 100 Å, LC Column 50 x 2.1 mm, Ea

Dimensions: 50 x 2.1 mm ID

Order No: 00B-4462-AN

Elution Type: Gradient

Eluent A: 0.1% Formic acid and 1mM NH4 formate in H2O

Eluent B: 60/40 MeOH/ACN with 0.1% formic and 1mM NH4 formate

Gradient Profile:	Step No.	Time (min)	Pct A	Pct B
	1	0	63	37
	2	1	40	60
	3	1.01	5	95
	4	1.5	5	95
	5	1.51	63	37
	6	2.5	63	37

Flow Rate: 600 µL/min

Col. Temp.: ambient

Detection: Mass Spectrometer (MS) @ amu (110 °C)

Detector Info: ESI+, MRM mode,

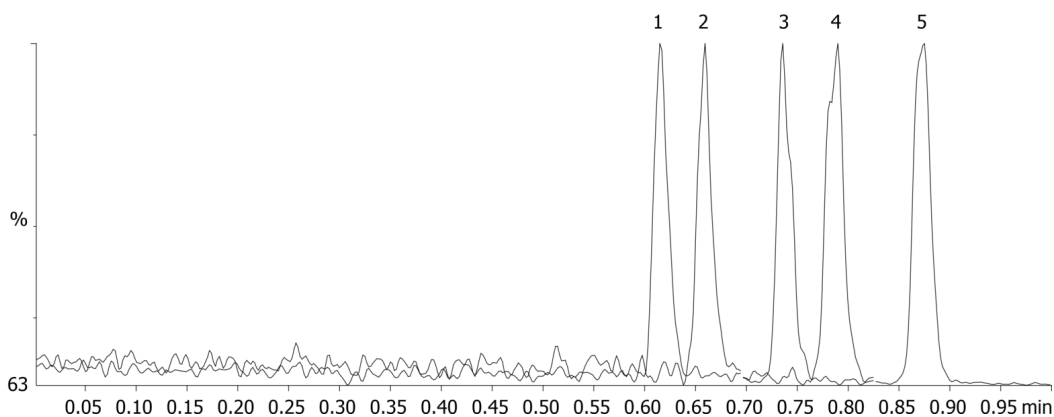
Aflatoxin M1 - 329.3-273.2 (internal standard)

Aflatoxin G2 - 331.3-313.2, Aflatoxin G1 - 329.2-234.3, Aflatoxin B2 - 315.3-287.3, Aflatoxin B1 - 313.2-285.3

18721



Products used in this application:



ANALYTES:

- 1** Aflatoxin M1
Retention Time: 0.62 min
- 2** Aflatoxin G2
Retention Time: 0.66 min
- 3** Aflatoxin G1
Retention Time: 0.74 min
- 4** Aflatoxin B2
Retention Time: 0.78 min
- 5** Aflatoxin B1
Retention Time: 0.87 min

