

HPLC Application

ID No.: 18758

Pharma Screen in 3.77min using Kinetex 2.6u C18 100x4.6mm

Column: Kinetex[®] 2.6 μ m C18 100 \AA , LC Column 100 x 4.6 mm, Ea

Dimensions: 100 x 4.6 mm ID

Order No: 00D-4462-E0

Elution Type: Gradient

Eluent A: Water with 0.1% H₃PO₄

Eluent B: Acetonitrile with 0.1% H₃PO₄

Gradient Profile:	Step No.	Time (min)	Pct A	Pct B
	1	0	95	5
	2	4	5	95

Flow Rate: 2 mL/min

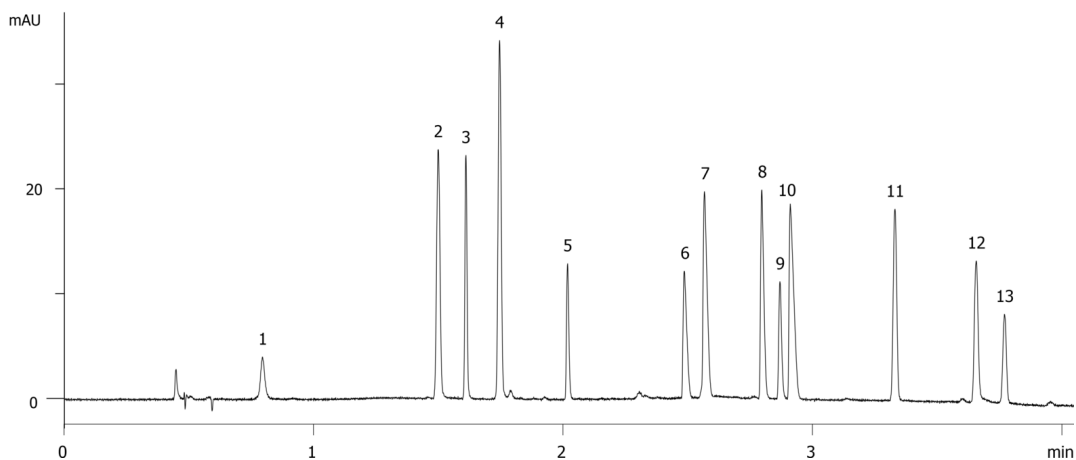
Col. Temp.: ambient

Detection: UV-Vis Abs.-Variable Wave.(UV) @ 215 nm (ambient)

18758



Products used in this application:



Pharma Screen in 3.77min using Kinetex 2.6u C18 100x4.6mm

ANALYTES:

- 1 Procainamide
- 2 Acetaminophen
- 3 Folic acid
- 4 Sulfathiazole
- 5 Acebutolol
- 6 Dextromethorphan
- 7 Diphenhydramine
- 8 Propafenone
- 9 Amitriptyline
- 10 Fluoxetine
- 11 Naproxen
- 12 Diflunisal
- 13 Indomethacin

