

HPLC Application

ID No.: 18764

Peptide Map of unreduced Human Ig-G2 on Kinetex 2.6µm C18 150 x 2.1mm ID

Column: Kinetex® 2.6 µm C18 100 Å, LC Column 150 x 2.1 mm, Ea

Dimensions: 150 x 2.1 mm ID

Order No: 00F-4462-AN

Elution Type: Gradient

Eluent A: 0.1% TFA/2% ACN/Water

Eluent B: 0.09% TFA/98% ACN/Water

Gradient Profile:	Step No.	Time (min)	Pct A	Pct B
	1	0	98	2
	2	2	98	2
	3	37	52	48

Flow Rate: 1 mL/min

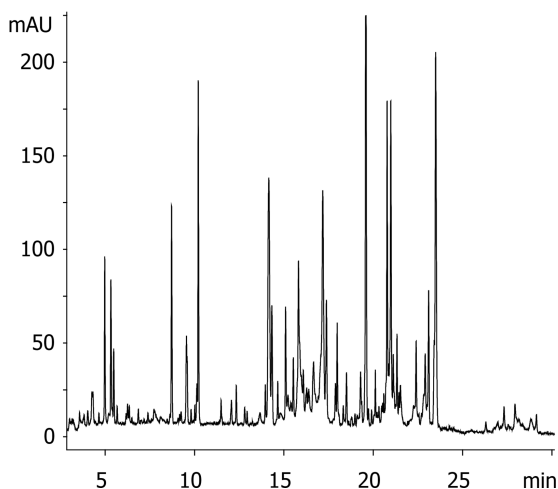
Col. Temp.: ambient

Detection: UV-Vis Abs.-Variable Wave.(UV) @ 214 nm (ambient)

18764



Products used in this application:



ANALYTES:

1 Hu-IgG2 Lys-C / Asn-N

