

HPLC Application

ID No.: 18766

Peptide Map of reduced and alkylated Ig-G1 on Kinetex 2.6µm C18 150 x 4.6mm ID

Column: Kinetex[®] 2.6 µm C18 100 Å, LC Column 150 x 4.6 mm, Ea

Dimensions: 150 x 4.6 mm ID

Order No: 00F-4462-E0

Elution Type: Gradient

Eluent A: 0.1% TFA/2% ACN/Water

Eluent B: 0.085% TFA in ACN

Gradient Profile:	Step No.	Time (min)	Pct A	Pct B
	1	0	99	1
	2	40	44	56
	3	41	44	56

Flow Rate: 1 mL/min

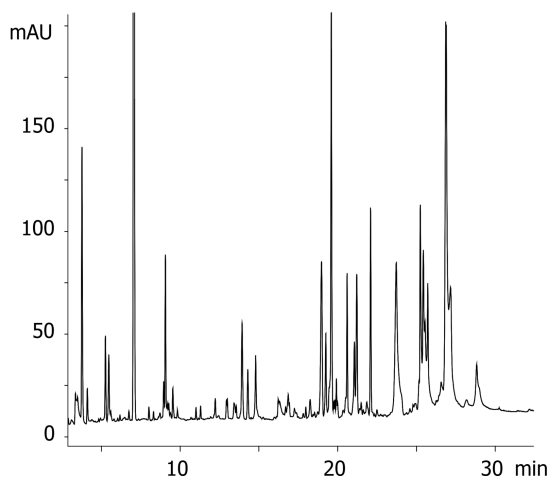
Col. Temp.: ambient

Detection: UV-Vis Abs.-Variable Wave.(UV) @ 214 nm (ambient)

18766



Products used in this application:



ANALYTES:

- 1 Hu-IgG1 Reduced and Alkylated

