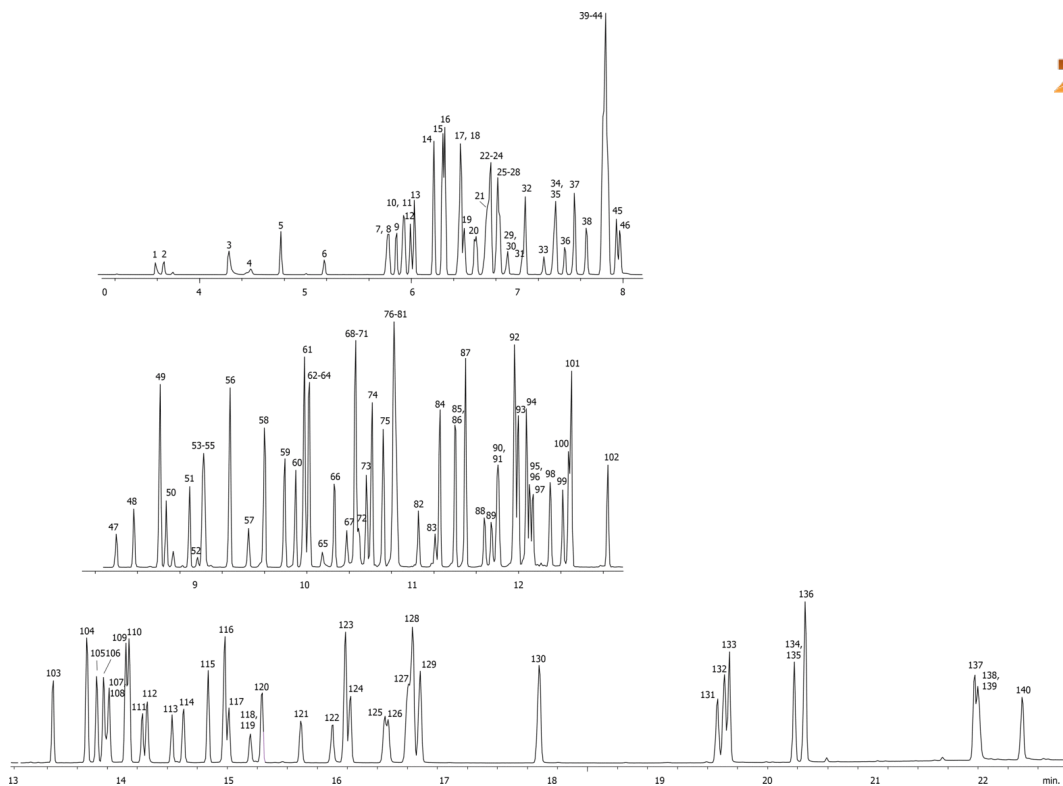


## EPA Method 8270C: Semivolatile Organics on ZB-XLB-HT

**Column:** Zebron™ ZB-XLB-HT, GC Cap. Column 30 m x 0.25 mm x 0.25 µm, Ea  
**Phase:** Proprietary XLB Phase  
**Dimensions:** 30 meters x 0.25 mm x 0.25 µm  
**Order No:** 7HG-G024-11  
**Oven Profile:** 40 °C for 1.5 min to 260 °C @ 20 °C/min to 290 °C @ 5 °C/min to 350 °C @ 25 °C/min for 2 min  
**Carrier Gas:** Constant Flow Helium, 1 mL/min  
**Injection:** Pulsed :1 1 µL @ 280°C  
**Detection:** Mass Selective (MSD) (350°C)  
**Analyst Note:** Analytes are 20ppm in dichloromethane



Products used in this application:



## EPA Method 8270C: Semivolatile Organics on ZB-XLB-HT

## ANALYTES:

1	Pyridine	41	Terpineol	81	Azobenzene
2	N-Nitrosodimethylamine	42	Hexachloro-1,3-butadiene	82	2,4,6-Tribromophenol
3	2-Picoline	43	Hexachloropropene	83	2-Methyl-4,6-dinitrophenol
4	N-Nitrosomethylethylamine	44	Naphthalene	84	4-Bromophenyl phenyl ether
5	2-Fluorobiphenyl	45	2,6-Dichlorophenol	85	n-Octadecane
6	N-Nitrosodiethylamine	46	p-Chloroaniline	86	alpha-BHC
7	Phenol-d5	47	N-Nitrosodi-n-butylamine	87	Hexachlorobenzene
8	Phenol	48	4-Chloro-3-methylphenol	88	4-Aminobiphenyl
9	n-Decane	49	2-Methylnaphthalene	89	Pentachlorophenol
10	Aniline	50	Hexachlorocyclopentadiene	90	gamma-BHC
11	Pentachloroethane	51	1,2,4,5-Tetrachlorobenzene	91	Pentachloronitrobenzene
12	2-Chlorophenol	52	2,3-Dichloroaniline	92	Phenanthrene-d10
13	bis(2-Chloroethyl)ether	53	2,4,6-Trichlorophenol	93	Phenanthrene
14	1,3-Dichlorobenzene	54	2-Fluorophenol	94	Anthracene
15	1,4-Dichlorobenzene-D4	55	2,4,5-Trichlorophenol	95	Dinoseb
16	1,4-Dichlorobenzene	56	2-Chloronaphthalene	96	1,3,5-Trinitrobenzene
17	Benzyl alcohol	57	2-Nitroaniline	97	b-BHC
18	1,2-Dichlorobenzene	58	Dimethyl phthalate	98	Carbazole
19	o-Cresol	59	Acenaphthylene	99	delta-BHC
20	bis(2-Chloroisopropyl)ether	60	2,6-Dinitrotoluene	100	Heptachlor
21	p-Cresol	61	Acenaphthene-d10	101	Di-n-butyl phthalate
22	m-Cresol	62	Acenaphthene	102	Aldrin
23	3-Methylphenol	63	3-Nitroaniline	103	Heptachlor epoxide
24	Hexachloroethane	64	1,3-Dinitrobenzene	104	Fluoranthene
25	Nitrosodi-n-propylamine	65	4-Nitrophenol	105	gamma-Chlordane
26	N-Nitroso-di-n-propylamine	66	Pentachlorobenzene	106	alpha-Chlordane
27	o-Toluidine	67	1-Naphthylamine	107	Benzidine
28	Acetophenone	68	Diethyl phthalate	108	Endosulfan I
29	N-Nitrosomorpholine	69	2,3,4,6-Tetrachlorophenol	109	4,4-â€™-DDE
30	N-Nitrosopyrrolidine	70	Diethyl phthalate	110	Pyrene
31	Nitrobenzene-d5	71	2,4-Dinitrophenol	111	p-Terphenyl-d14
32	Nitrobenzene	72	2-Naphthylamine	112	Dieldrin
33	N-Nitrosopiperidine	73	2,4-Dinitrotoluene	113	p-Dimethylaminoazobenzene
34	Isophorone	74	4-Chlorophenylphenylether	114	Endrin
35	2,4-Dimethylphenol	75	Fluorene	115	4,4-â€™-DDD
36	2-Nitrophenol	76	N-Nitrosodiphenylamine	116	Butyl benzyl phthalate
37	bis(2-Chloroethoxy)methane	77	Azobenzene	117	Endosulfan II
38	2,4-Dichlorophenol	78	Diphenylamine	118	Endrin aldehyde
39	1,2,4-Trichlorobenzene	79	4-Nitroaniline	119	3,3'-Dimethylbenzidine
40	Naphthalene-d8	80	5-Nitro-o-toluidine	120	4,4-â€™-DDT
				121	Endosulfan sulfate
				122	2-Acetylaminofluorene
				123	bis(2-Ethylhexyl)phthalate
				124	Methoxychlor
				125	Endrin ketone
				126	3,3'-Dichlorobenzidine
				127	Benz[a]anthracene
				128	Chrysene-d12
				129	Chrysene
				130	Di-n-octyl phthalate
				131	7,12-Dimethylbenz[a]anthracene

