

## EPA Method 8081 - Chlorinated Pesticides on ZB-XLB-HT(Dual column)

**Column:** Zebron™ ZB-XLB-HT, GC Cap. Column 30 m x 0.25 mm x 0.25 μm, Ea

**Phase:** Proprietary XLB Phase

**Dimensions:** 30 meters x 0.25 mm x 0.25 μm

**Order No:** 7HG-G024-11

**Oven Profile:** 160 °C for 1 min to 250 °C @ 15 °C/min for 1 min to 320 °C @ 10 °C/min

**Carrier Gas:** Constant Flow Helium, 0.8 mL/min

**Injection:** Splitless 15:1 1 μL @ 250°C

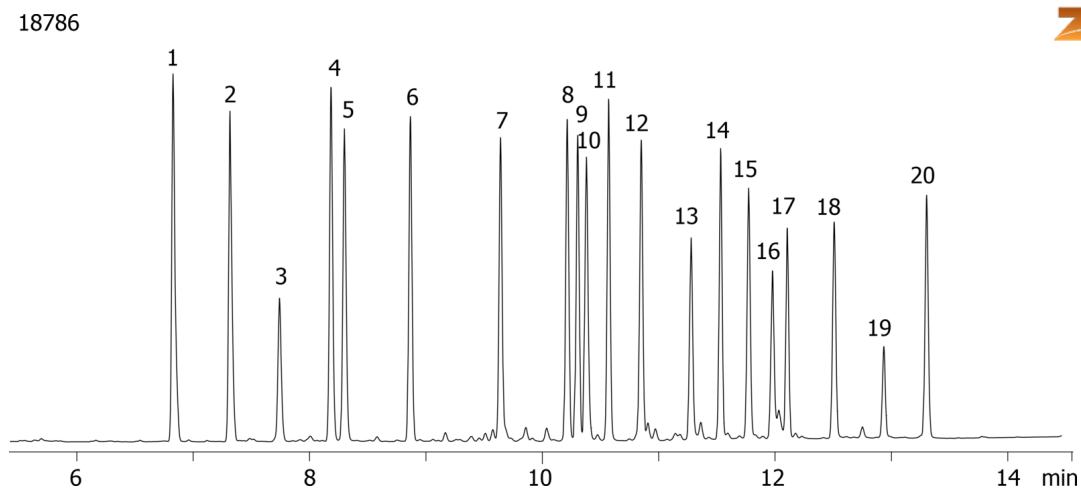
**Detection:** Electron Capture (ECD) (335°C)

**Analyst Note:** Analytes are 25 ppb in isooctane.

Dual column with ZB-35-HT



Products used in this application:



## EPA Method 8081 - Chlorinated Pesticides on ZB-XLB-HT(Dual column)

### ANALYTES:

- 1 alpha-BHC
- 2 gamma-BHC
- 3 b-BHC
- 4 delta-BHC
- 5 Heptachlor
- 6 Aldrin
- 7 Heptachlor epoxide
- 8 gamma-Chlordane
- 9 alpha-Chlordane
- 10 Endosulfan I
- 11 4,4<sup>™</sup>-DDE
- 12 Dieldrin
- 13 Endrin
- 14 4,4<sup>™</sup>-DDD
- 15 Endosulfan II
- 16 Endrin aldehyde
- 17 4,4<sup>™</sup>-DDT
- 18 Endosulfan sulfate
- 19 Methoxychlor
- 20 Endrin ketone

