

## Atenolol and Related Substances CRS using Luna 5µm C18(2) 125 x 4.0mm

**Column:** Luna® 5 µm C18(2) 100 Å, LC Column 125 x 4 mm, Ea

**Dimensions:** 125 x 4 mm ID

**Order No:** 00E-4252-D0

**Elution Type:** Isocratic

**Eluent A:** EP Mobile Phase

Gradient	Step No.	Time (min)	Pct A
<b>Profile:</b>	<b>1</b>	0	100

**Flow Rate:** 0.6 mL/min

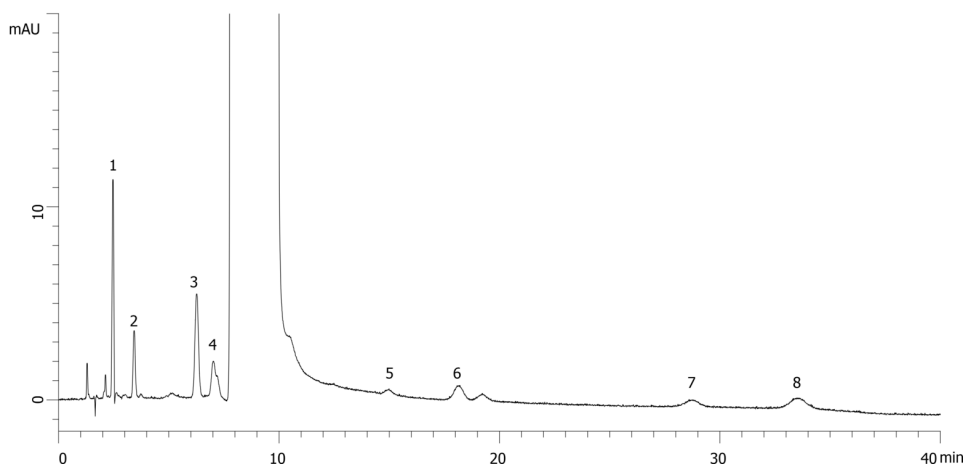
**Col. Temp.:** 25 °C

**Detection:** UV-Vis Abs.-Variable Wave.(UV) @ 226 nm (ambient)

**Analyst Note:** 12.5 mM KH<sub>2</sub>PO<sub>4</sub> in Water pH 3.0 + 2.0g Sodium Octanesulfonate + 0.8g Tetrabutyl Ammonium Hydrogen Sulfate/Methanol/THF v/v/v% 80:18:2  
18825



Products used in this application:



### ANALYTES:

- 1 Impurity B
- 2 Impurity A
- 3 Impurity J
- 4 Impurity I
- 5 impurities D and E
- 6 Impurity F
- 7 Impurity G
- 8 Impurity H

