

HPLC Application

ID No.: 18828

Atenolol and Related Substances CRS using Kinetex 2.6µm C18 100 x 4.6mm at 01.3ml/min

Column: Kinetex[®] 2.6 µm C18 100 Å, LC Column 100 x 4.6 mm, Ea

Dimensions: 100 x 4.6 mm ID

Order No: 00D-4462-E0

Elution Type: Isocratic

Eluent A: EP Mobile Phase

Gradient	Step No.	Time (min)	Pct A
Profile:	1	0	100

Flow Rate: 1.3 mL/min

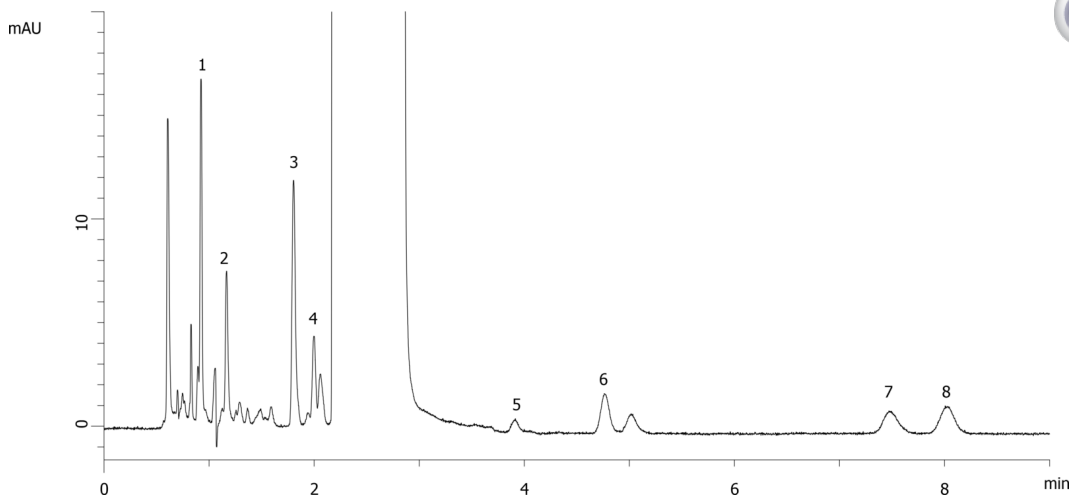
Col. Temp.: ambient

Detection: UV-Vis Abs.-Variable Wave.(UV) @ 226 nm (ambient)

18828



Products used in this application:



ANALYTES:

- 1 Impurity B
- 2 Impurity A
- 3 Impurity J
- 4 Impurity J
- 5 impurities D and E
- 6 Impurity F
- 7 Impurity G
- 8 Impurity H

