

# HPLC Application

ID No.: 18842

## Water-soluble vitamins on Kinetex 2.6µm HILIC 150 x 4.6mm

**Column:** Kinetex<sup>®</sup> 2.6 µm HILIC 100 Å, LC Column 150 x 4.6 mm, Ea

**Dimensions:** 150 x 4.6 mm ID

**Order No:** 00F-4461-E0

**Elution Type:** Gradient

**Eluent A:** Acetonitrile

**Eluent B:** 100mM Ammonium formate pH 3.2

**Eluent C:** Water

Gradient Profile:	Step No.	Time (min)	Pct A	Pct B	Pct C
	1	0	90	10	0
	2	5	90	10	0
	3	20	50	10	40

**Flow Rate:** 1 mL/min

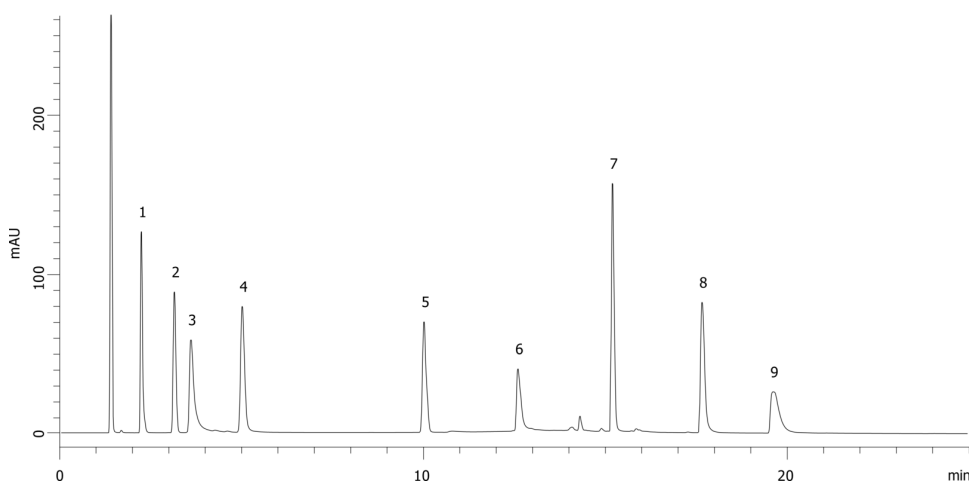
**Col. Temp.:** ambient

**Detection:** UV-Vis Abs.-Variable Wave.(UV) @ 260 nm (ambient)

18842



Products used in this application:



### ANALYTES:

- 1 Nicotinamide
- 2 PABA
- 3 Pyridoxine
- 4 Riboflavin
- 5 Nicotinic acid
- 6 Ascorbic acid
- 7 Folic acid
- 8 Vitamin B12
- 9 Thiamine

