

HPLC Application

ID No.: 18845

Extraction of Amphetamines-NIDA5 Using Strata X-C on Kinetex 2.6µm C18 50 x 2.1mm by LCMS

Column: Kinetex® 2.6 µm C18 100 Å, LC Column 50 x 2.1 mm, Ea

Dimensions: 50 x 2.1 mm ID

Order No: 00B-4462-AN

Elution Type: Gradient

Eluent A: 0.1%FA-5mM NH4Ac in H2O

Eluent B: 0.1%FA-5mM NH4Ac in Methanol

Gradient Profile:	Step No.	Time (min)	Pct A	Pct B
	1	0	90	10
	2	1	80	20
	3	3	70	30
	4	3.01	5	95
	5	3.3	5	95
	6	3.31	90	10
	7	5.1	90	10

Flow Rate: 450 µL/min

Col. Temp.: ambient

Detection: Mass Spectrometer (MS) @ amu (ambient)

Detector Info: ESI Condition

Positive Ionization

NEB: 8.00

CUR: 8.00

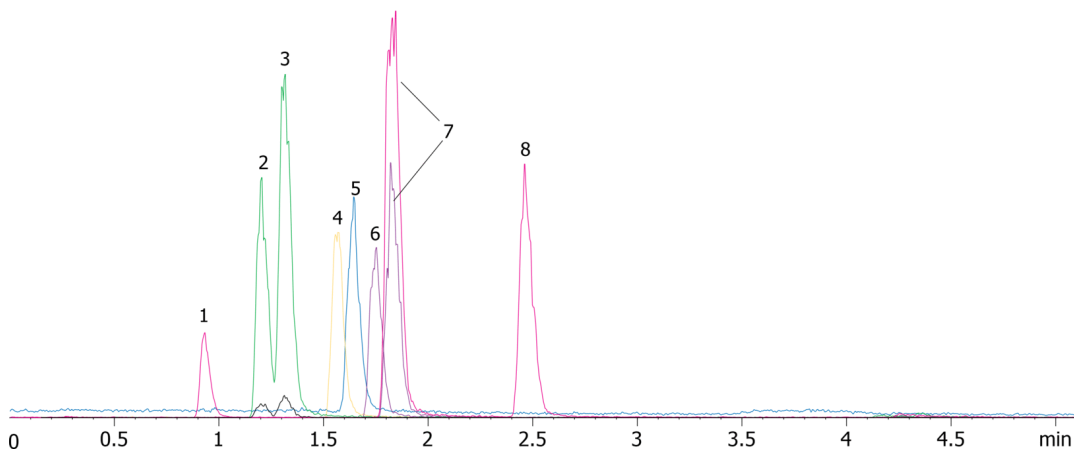
IS: 5500.00

TEM: 0.00

CAD: 7.00

EP: 10.00

18845



Products used in this application:



Extraction of Amphetamines-NIDA5 Using Strata X-C on Kinetex 2.6 μ m C18 50 x 2.1mm by LCMS

ANALYTES:

- 1 Norephedrine
- 2 Ephedrine
- 3 Pseudoephedrine
- 4 Amphetamine-d11
- 5 Amphetamine
- 6 Methamphetamine-d14
- 7 Methamphetamine
- 8 Phentermine

