

HPLC Application

ID No.: 18846

Extraction of Opiates-NIDA5 Using Strata X-C on Kinetex 2.6µm C18 50 x 2.1mm ID by LCMS

Column: Kinetex[®] 2.6 µm C18 100 Å, LC Column 50 x 2.1 mm, Ea

Dimensions: 50 x 2.1 mm ID

Order No: 00B-4462-AN

Elution Type: Gradient

Eluent A: 0.1% Formic acid in H₂O

Eluent B: 0.1% Formic acid in ACN

Gradient Profile:	Step No.	Time (min)	Pct A	Pct B
	1	0	95	5
	2	0.24	95	5
	3	1.25	70	30
	4	2.5	70	30
	5	2.51	5	95
	6	2.8	5	95
	7	2.81	95	5
	8	4.6	95	5

Flow Rate: 450 µL/min

Col. Temp.: ambient

Detection: Mass Spectrometer (MS) @ amu (ambient)

Detector Info: ESI conditions

Positive Ionization

NEB: 12.00

CUR: 11.00

IS: 4500.00

TEM: 450.00

CAD: 11.00

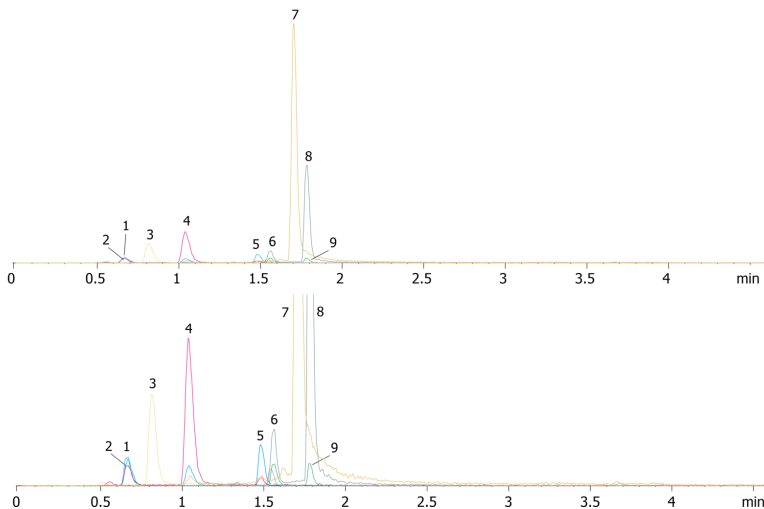
EP: 10.00



Products used in this application:



18846



Extraction of Opiates-NIDA5 Using Strata X-C on Kinetex 2.6 μ m C18 50 x 2.1mm ID by LCMS

ANALYTES:

- 1 Morphine-d3
- 2 Morphine
- 3 Oxymorphone
- 4 Hydromorphone
- 5 Norcodeine
- 6 Codeine-d6
- 7 Oxycodone
- 8 Hydrocodone
- 9 Codeine

